

7.6 T2000-700/-900 RF PCB

T2000-700/-900 Parts List (IPN 220-01289-01)

Parts List Amendments

Ref	Var	IPN	Description	Ref	Var	IPN	Description
C1		015-24100-08	CAP CER 0805 CHIP 1N 10% X7R 50V	C188		015-23100-01	CAP CER 0805 CHIP 100P 5% NPO 50V
C2		015-24100-08	CAP CER 0805 CHIP 1N 10% X7R 50V	C189		015-23470-08	CAP CER 0805 CHIP 470P 10% X7R 50V
C3		015-24100-08	CAP CER 0805 CHIP 1N 10% X7R 50V	C190		015-23470-08	CAP CER 0805 CHIP 470P 10% X7R 50V
C100		015-23150-01	CAP CER 0805 CHIP 150P 5% NPO 50V	C191		015-23560-08	CAP CER 0805 CHIP 560P 10% X7R 50V
C101		015-22120-01	CAP CER 0805 CHIP 12P 5% NPO 50V	C192		015-22330-01	CAP CER 0805 CHIP 33P 5% NPO 50V
C102		015-23150-01	CAP CER 0805 CHIP 150P 5% NPO 50V	C193		020-57470-10	CAP ELECT AI RDL 4U7 50V LO ESR
C104		015-06100-08	CAP CER 1206 CHIP 100N 10% X7R 50V	C194		015-23150-01	CAP CER 0805 CHIP 150P 5% NPO 50V
C105		015-21100-01	CAP CER 0805 CHIP 1P0 +/-0.25P NPO 50V	C195		015-23150-01	CAP CER 0805 CHIP 150P 5% NPO 50V
C106		015-22330-01	CAP CER 0805 CHIP 33P 5% NPO 50V	C197		015-06100-08	CAP CER 1206 CHIP 100N 10% X7R 50V
#C107	7XX	015-21560-01	CAP CER 0805 CHIP 5P6 +/-0.25P NPO	C198		015-21100-01	CAP CER 0805 CHIP 1P0 +/-0.25P NPO 50V
#C107	9XX	015-21470-01	CAP CER 0805 CHIP 4P7 +/-0.25P NPO	C199		015-24100-08	CAP CER 0805 CHIP 1N 10% X7R 50V
C108		015-23150-01	CAP CER 0805 CHIP 150P 5% NPO 50V	C200		015-25100-08	CAP CER 0805 CHIP 10N 10% X7R 50V
#C109	9XX	015-21820-01	CAP CER 0805 CHIP 8P2 +/-0.25P NPO	C201		015-06100-08	CAP CER 1206 CHIP 100N 10% X7R 50V
C110		015-22470-01	CAP CER 0805 CHIP 47P 5% NPO 50V	C202		015-25100-08	CAP CER 0805 CHIP 10N 10% X7R 50V
#C111	7XX	015-21560-01	CAP CER 0805 CHIP 5P6 +/-0.25P NPO	C203		015-22390-01	CAP CER 0805 CHIP 39P 5% NPO 50V
#C111	9XX	015-22100-01	CAP CER 0805 CHIP 10P +/-0.5P NPO 5	C204		015-23150-01	CAP CER 0805 CHIP 150P 5% NPO 50V
#C112	7XX	015-21120-01	CAP CER 0805 CHIP 1P2 +/-0.25 NPO 5	C205		015-25220-08	CAP CER 0805 CHIP 22N 10% X7R 50V
#C112	9XX	015-21150-01	CAP CER 0805 CHIP 1P5 +/-0.25P NPO	C206		015-06100-08	CAP CER 1206 CHIP 100N 10% X7R 50V
C114		015-22470-01	CAP CER 0805 CHIP 47P 5% NPO 50V	C207		015-25100-08	CAP CER 0805 CHIP 10N 10% X7R 50V
#C115	7XX	015-21820-01	CAP CER 0805 CHIP 8P2 +/-0.25P NPO	C208		015-24100-08	CAP CER 0805 CHIP 1N 10% X7R 50V
#C115	9XX	015-22120-01	CAP CER 0805 CHIP 12P 5% NPO 50V	C209		015-25100-08	CAP CER 0805 CHIP 10N 10% X7R 50V
#C117	7XX	015-21120-01	CAP CER 0805 CHIP 1P2 +/-0.25 NPO 5	C210		015-25100-08	CAP CER 0805 CHIP 10N 10% X7R 50V
#C117	9XX	015-21150-01	CAP CER 0805 CHIP 1P5 +/-0.25P NPO	C211		015-23180-01	CAP CER 0805 CHIP 180P 5% NPO 50V
#C118	9XX	015-21820-01	CAP CER 0805 CHIP 8P2 +/-0.25P NPO	C212		015-21560-01	CAP CER 0805 CHIP 5P6 +/-0.25P NPO 50V
C119		015-22470-01	CAP CER 0805 CHIP 47P 5% NPO 50V	C213		020-58470-05	CAP ELECT AI RDL 47M 16V 6.3X7MM
C121		015-21560-01	CAP CER 0805 CHIP 5P6 +/-0.25P NPO 50V	C214		015-23150-01	CAP CER 0805 CHIP 150P 5% NPO 50V
C122		015-21560-01	CAP CER 0805 CHIP 5P6 +/-0.25P NPO 50V	C215		020-57470-10	CAP ELECT AI RDL 4U7 50V LO ESR
C123		015-23150-01	CAP CER 0805 CHIP 150P 5% NPO 50V	C216		015-25100-08	CAP CER 0805 CHIP 10N 10% X7R 50V
C124		015-21680-01	CAP CER 0805 CHIP 6P8 +/-0.25P NPO 50V	C217		020-58470-05	CAP ELECT AI RDL 47M 16V 6.3X7MM
C125		015-21330-01	CAP CER 0805 CHIP 3P3 +/-0.25P NPO 50V	C218		020-57470-10	CAP ELECT AI RDL 4U7 50V LO ESR
C126		015-21560-01	CAP CER 0805 CHIP 5P6 +/-0.25P NPO 50V	C219		020-57470-10	CAP ELECT AI RDL 4U7 50V LO ESR
C127		015-22120-01	CAP CER 0805 CHIP 12P 5% NPO 50V	C220		022-55100-10	CAP MYLAR AI 10N 5% 63V POTTED
C128		015-22330-01	CAP CER 0805 CHIP 33P 5% NPO 50V	C221		022-57100-02	CAP MYLAR AI 1M 20% 50V POTTED
C129		015-25100-08	CAP CER 0805 CHIP 10N 10% X7R 50V	C222		022-06100-15	CAP MET POLYSTR 100N 5% 50V 5.6MM HI
C130		015-25100-08	CAP CER 0805 CHIP 10N 10% X7R 50V	C223		015-23150-01	CAP CER 0805 CHIP 150P 5% NPO 50V
C132		015-23150-01	CAP CER 0805 CHIP 150P 5% NPO 50V	C224		015-24100-08	CAP CER 0805 CHIP 1N 10% X7R 50V
C133		015-22470-01	CAP CER 0805 CHIP 47P 5% NPO 50V	C225		015-23270-01	CAP CER 0805 CHIP 270P 5% NPO 50V
C134		015-21680-01	CAP CER 0805 CHIP 6P8 +/-0.25P NPO 50V	C227		015-22270-01	CAP CER 0805 CHIP 27P 5% NPO 50V
C135		015-22330-01	CAP CER 0805 CHIP 33P 5% NPO 50V	C228		015-06100-08	CAP CER 1206 CHIP 100N 10% X7R 50V
C136		015-21680-01	CAP CER 0805 CHIP 6P8 +/-0.25P NPO 50V	C229		020-58470-05	CAP ELECT AI RDL 47M 16V 6.3X7MM
C137		015-23100-01	CAP CER 0805 CHIP 100P 5% NPO 50V	C230		015-24470-08	CAP CER 0805 CHIP 4N7 10% X7R 50V
C138		015-21680-01	CAP CER 0805 CHIP 6P8 +/-0.25P NPO 50V	C231		015-23270-01	CAP CER 0805 CHIP 270P 5% NPO 50V
C139		015-22330-01	CAP CER 0805 CHIP 33P 5% NPO 50V	C232		015-21470-01	CAP CER 0805 CHIP 4P7 +/-0.25P NPO 50V
C140		015-21680-01	CAP CER 0805 CHIP 6P8 +/-0.25P NPO 50V	C233		020-57470-10	CAP ELECT AI RDL 4U7 50V LO ESR
C141		015-22470-01	CAP CER 0805 CHIP 47P 5% NPO 50V	C234		020-57470-10	CAP ELECT AI RDL 4U7 50V LO ESR
C142		015-22120-01	CAP CER 0805 CHIP 12P 5% NPO 50V	C235		015-06100-08	CAP CER 1206 CHIP 100N 10% X7R 50V
C145		015-23100-01	CAP CER 0805 CHIP 100P 5% NPO 50V	C236		015-23150-01	CAP CER 0805 CHIP 150P 5% NPO 50V
C146		015-24100-08	CAP CER 0805 CHIP 1N 10% X7R 50V	C237		015-22270-01	CAP CER 0805 CHIP 27P 5% NPO 50V
C147		015-25100-08	CAP CER 0805 CHIP 10N 10% X7R 50V	C238		015-22470-01	CAP CER 0805 CHIP 47P 5% NPO 50V
C148		015-22100-01	CAP CER 0805 CHIP 10P +/-0.5P NPO 50V	C239		015-21100-01	CAP CER 0805 CHIP 1P0 +/-0.25P NPO 50V
C149		015-23150-01	CAP CER 0805 CHIP 150P 5% NPO 50V	C240		015-23270-01	CAP CER 0805 CHIP 270P 5% NPO 50V
C150		015-23100-01	CAP CER 0805 CHIP 100P 5% NPO 50V	C241		015-23270-01	CAP CER 0805 CHIP 270P 5% NPO 50V
C151		015-06100-08	CAP CER 1206 CHIP 100N 10% X7R 50V	C242		015-25100-08	CAP CER 0805 CHIP 10N 10% X7R 50V
C152		015-23100-01	CAP CER 0805 CHIP 100P 5% NPO 50V	C243		015-23150-01	CAP CER 0805 CHIP 150P 5% NPO 50V
C152A		015-25100-08	CAP CER 0805 CHIP 10N 10% X7R 50V	C244		015-21560-01	CAP CER 0805 CHIP 5P6 +/-0.25P NPO 50V
C153		020-57470-10	CAP ELECT AI RDL 4U7 50V LO ESR	C245		015-21270-01	CAP CER 0805 CHIP 2P7 +/-0.25P NPO 50V
C153A		015-23100-01	CAP CER 0805 CHIP 100P 5% NPO 50V	C246		015-23150-01	CAP CER 0805 CHIP 150P 5% NPO 50V
C154		015-25100-08	CAP CER 0805 CHIP 10N 10% X7R 50V	C247		015-21820-01	CAP CER 0805 CHIP 8P2 +/-0.25P NPO 50V
C155		015-23100-01	CAP CER 0805 CHIP 100P 5% NPO 50V	C249		015-23270-01	CAP CER 0805 CHIP 270P 5% NPO 50V
C156		015-22220-01	CAP CER 0805 CHIP 22P 5% NPO 50V	C250		015-22820-01	CAP CER 0805 CHIP 82P 5% NPO 50V
C157		015-06100-08	CAP CER 1206 CHIP 100N 10% X7R 50V	C251		015-23100-01	CAP CER 0805 CHIP 100P 5% NPO 50V
C158		015-24100-08	CAP CER 0805 CHIP 1N 10% X7R 50V	C252		015-23180-01	CAP CER 0805 CHIP 180P 5% NPO 50V
C174		020-58470-05	CAP ELECT AI RDL 47M 16V 6.3X7MM	C253		015-22820-01	CAP CER 0805 CHIP 82P 5% NPO 50V
C175		015-06100-08	CAP CER 1206 CHIP 100N 10% X7R 50V	C300		015-03150-06	CAP CER 1210 CHIP 150P NPO 500V GRM42-2
C176		015-06100-08	CAP CER 1206 CHIP 100N 10% X7R 50V	C301	7XX	015-23270-01	CAP CER 0805 CHIP 270P 5% NPO 50V
C179		015-25100-08	CAP CER 0805 CHIP 10N 10% X7R 50V	C301	9XX	015-23220-01	CAP CER 0805 CHIP 220P 5% NPO 50V
C180		015-06100-08	CAP CER 1206 CHIP 100N 10% X7R 50V	C302	7XX	015-21820-01	CAP CER 0805 CHIP 8P2 +/-0.25P NPO 5
C181		015-06100-08	CAP CER 1206 CHIP 100N 10% X7R 50V	C302	9XX	015-21680-01	CAP CER 0805 CHIP 6P8 +/-0.25P NPO 5
C182		015-23150-01	CAP CER 0805 CHIP 150P 5% NPO 50V	C303	7XX	015-02150-06	CAP CER 1210 CHIP 15P NPO 500V GRM42
C184		015-23150-01	CAP CER 0805 CHIP 150P 5% NPO 50V	C303	9XX	015-02180-06	CAP CER 1210 CHIP 18P NPO 500V GRM42
C185		015-25100-08	CAP CER 0805 CHIP 10N 10% X7R 50V	C304		015-24100-08	CAP CER 0805 CHIP 1N 10% X7R 50V
C186		015-25100-08	CAP CER 0805 CHIP 10N 10% X7R 50V	C304	7XX	015-22150-01	CAP CER 0805 CHIP 15P 5% NPO 50V
C187		015-24100-08	CAP CER 0805 CHIP 1N 10% X7R 50V	C305	9XX	015-22120-01	CAP CER 0805 CHIP 12P 5% NPO 50V

Ref	Var	IPN	Description	Ref	Var	IPN	Description
Q208		000-10008-48	(S) XSTR SMD BCW60/BC848B215 NPN SOT23	R234		036-13180-00	RES M/F 0805 CHIP 180E 5%
Q209		000-10008-57	(S) XSTR SMD BCW70 PNP SOT23 AF SML SIG	R235		036-13330-00	RES M/F 0805 CHIP 330E 5%
Q210		000-10003-12	(S) XSTR SMD BFR31 N JFET SOT-23	R236		036-12470-00	RES M/F 0805 CHIP 47E 5%
Q211		000-10008-07	(S) XSTR SMD BC807 PNP SOT-23 AF LO PWR	R237		036-13100-00	RES M/F 0805 CHIP 100E 5%
Q212		000-10095-10	(S) XSTR SMD MMBR951 NPN UHF SOT-23	R238		036-14820-00	RES M/F 0805 CHIP 8K2 5%
Q213		000-10008-48	(S) XSTR SMD BCW60/BC848B215 NPN SOT23	R239		036-15220-00	RES M/F 0805 CHIP 22K 5%
Q214		000-10057-10	(S) XSTR SMD MMBR571 NPN SOT-23 UHF LO	R240		036-16100-00	RES M/F 0805 CHIP 100K 5%
Q215		000-10057-10	(S) XSTR SMD MMBR571 NPN SOT-23 UHF LO	R241		036-14150-00	RES M/F 0805 CHIP 1K5 5%
Q300		000-10095-10	(S) XSTR SMD MMBR951 NPN UHF SOT-23	R242		036-12220-00	RES M/F 0805 CHIP 22E 5%
Q301		000-00032-47	(S) XSTR MRF559 NPN XPACK UHF PWR 0.5W	R243		036-14220-00	RES M/F 0805 CHIP 2K2 5%
Q302		000-00032-56	(S) XSTR MRF630 NPN TO-39 UHF PWR 3W	R244		036-12220-00	RES M/F 0805 CHIP 22E 5%
Q303		000-10008-48	(S) XSTR SMD BCW60/BC848B215 NPN SOT23	R245		036-12220-00	RES M/F 0805 CHIP 22E 5%
Q304		000-00012-15	(S) XSTR BD234 PNP AF PWR TO126	R247		036-12100-00	RES M/F 0805 CHIP 10E 5%
Q305		000-00022-75	(S) XSTR SD1433 NPN STUD MTG UHF PWR 10	R248		036-10000-00	RES M/F 0805 CHIP ZERO OHM
Q306		000-00032-65	(S) XSTR MRF646 NPN 6FL UHF PWR 45W	R250		036-14220-00	RES M/F 0805 CHIP 2K2 5%
Q401		000-10008-57	(S) XSTR SMD BCW70 PNP SOT23 AF SML SIG	R251		036-13150-00	RES M/F 0805 CHIP 150E 5%
Q402		000-10008-17	(S) XSTR SMD BC817-25 NPN SOT-23 AF LO	R252		036-13820-00	RES M/F 0805 CHIP 820E 5%
R0		030-00000-00	RES FILM ZERO OHM 5% 7X2.5MM	R253		036-12470-00	RES M/F 0805 CHIP 47E 5%
R100		036-13330-00	RES M/F 0805 CHIP 330E 5%	R254		036-12330-00	RES M/F 0805 CHIP 33E 5%
R101		036-14390-00	RES M/F 0805 CHIP 3K9 5%	R255		036-12220-00	RES M/F 0805 CHIP 22E 5%
R102		036-13560-00	RES M/F 0805 CHIP 560E 5%	R256		036-14150-00	RES M/F 0805 CHIP 1K5 5%
R103		036-14220-00	RES M/F 0805 CHIP 2K2 5%	R257		036-14120-00	RES M/F 0805 CHIP 1K2 5%
R104		036-13120-00	RES M/F 0805 CHIP 120E 5%	R258		036-12100-00	RES M/F 0805 CHIP 10E 5%
R105		036-12180-00	RES M/F 0805 CHIP 18E 5%	R259		036-13390-00	RES M/F 0805 CHIP 390E 5%
R106		036-16100-00	RES M/F 0805 CHIP 100K 5%	R260		036-12180-00	RES M/F 0805 CHIP 18E 5%
R107		036-16100-00	RES M/F 0805 CHIP 100K 5%	R261		036-12330-00	RES M/F 0805 CHIP 33E 5%
R108		036-16100-00	RES M/F 0805 CHIP 100K 5%	R262		036-12100-00	RES M/F 0805 CHIP 10E 5%
R112		036-12470-00	RES M/F 0805 CHIP 47E 5%	R266		036-14330-00	RES M/F 0805 CHIP 3K3 5%
R113		036-11470-00	RES M/F 0805 CHIP 4E7 10%	R267		036-14330-00	RES M/F 0805 CHIP 3K3 5%
R114		036-13820-00	RES M/F 0805 CHIP 820E 5%	R268		036-12560-00	RES M/F 0805 CHIP 56E 5%
R115		036-15120-00	RES M/F 0805 CHIP 12K 5%	R269		036-11470-00	RES M/F 0805 CHIP 4E7 10%
R116		036-11470-00	RES M/F 0805 CHIP 4E7 10%	R270		036-11470-00	RES M/F 0805 CHIP 4E7 10%
R117		036-12100-00	RES M/F 0805 CHIP 10E 5%	R271		036-13220-00	RES M/F 0805 CHIP 220E 5%
R118		036-13100-00	RES M/F 0805 CHIP 100E 5%	R272		036-13220-00	RES M/F 0805 CHIP 220E 5%
R119		036-12100-00	RES M/F 0805 CHIP 10E 5%	R273		036-11470-00	RES M/F 0805 CHIP 4E7 10%
R120		036-13820-00	RES M/F 0805 CHIP 820E 5%	R274		036-14390-00	RES M/F 0805 CHIP 3K9 5%
R121		036-13180-00	RES M/F 0805 CHIP 180E 5%	R275		036-11470-00	RES M/F 0805 CHIP 4E7 10%
R122		036-15100-00	RES M/F 0805 CHIP 10K 5%	R276		036-14220-00	RES M/F 0805 CHIP 2K2 5%
R123		036-15100-00	RES M/F 0805 CHIP 10K 5%	R277		036-12330-00	RES M/F 0805 CHIP 33E 5%
R131		036-13100-00	RES M/F 0805 CHIP 100E 5%	R278		036-16100-00	RES M/F 0805 CHIP 100K 5%
R132		036-14220-00	RES M/F 0805 CHIP 2K2 5%	R282		036-13120-00	RES M/F 0805 CHIP 120E 5%
R133		036-13270-00	RES M/F 0805 CHIP 270E 5%	R284		036-15100-00	RES M/F 0805 CHIP 10K 5%
R135		036-15100-00	RES M/F 0805 CHIP 10K 5%	R285		036-15100-00	RES M/F 0805 CHIP 10K 5%
R138		036-16100-00	RES M/F 0805 CHIP 100K 5%	R286		036-14100-00	RES M/F 0805 CHIP 1K 5%
R140		036-15680-00	RES M/F 0805 CHIP 68K 5%	R287		036-16100-00	RES M/F 0805 CHIP 100K 5%
R140A		036-15330-00	RES M/F 0805 CHIP 33K 5%	R288		036-15390-00	RES M/F 0805 CHIP 39K 5%
R141		036-14150-00	RES M/F 0805 CHIP 1K5 5%	R301		036-13220-00	RES M/F 0805 CHIP 220E 5%
R142		036-15270-00	RES M/F 0805 CHIP 27K 5%	R302		036-14100-00	RES M/F 0805 CHIP 1K 5%
R142A		036-16100-00	RES M/F 0805 CHIP 100K 5%	R303		030-52680-20	RES FILM AI 68E 5% 0.4W 4X1.6MM
R143		036-15330-00	RES M/F 0805 CHIP 33K 5%	R304		036-13100-00	RES M/F 0805 CHIP 100E 5%
R143A		036-15330-00	RES M/F 0805 CHIP 33K 5%	R305		036-12100-00	RES M/F 0805 CHIP 10E 5%
R144		036-15680-00	RES M/F 0805 CHIP 68K 5%	R307		030-03220-00	RES FILM 220E 5% 0.25W 7X2.5MM
R144A		036-16120-00	RES M/F 0805 CHIP 120K 5%	R308		030-54120-20	RES FILM AI 1K2 5% 0.4W 4X1.6MM
R145		036-14150-00	RES M/F 0805 CHIP 1K5 5%	R309		036-12680-00	RES M/F 0805 CHIP 68E 5%
R145A		036-15330-00	RES M/F 0805 CHIP 33K 5%	R310		030-53220-20	RES FILM AI 220E 5% 0.4W 4X1.6MM
R146		036-12220-00	RES M/F 0805 CHIP 22E 5%	R311		036-13180-00	RES M/F 0805 CHIP 180E 5%
R147		036-13220-00	RES M/F 0805 CHIP 220E 5%	R312		036-13680-00	RES M/F 0805 CHIP 680E 5%
R148		036-13560-00	RES M/F 0805 CHIP 560E 5%	R314		030-03470-00	RES FILM 470E 5% 0.25W 7X2.5MM
R149		036-16100-00	RES M/F 0805 CHIP 100K 5%	R315		030-52220-20	RES FILM AI 22E 5% 0.4W 4X1.6MM
R150		036-16100-00	RES M/F 0805 CHIP 100K 5%	R315A		030-52220-20	RES FILM AI 22E 5% 0.4W 4X1.6MM
R151		036-14330-00	RES M/F 0805 CHIP 3K3 5%	R316		036-13150-00	RES M/F 0805 CHIP 150E 5%
R152		036-16390-00	RES M/F 0805 CHIP 390K 5%	R317		030-53470-20	RES FILM AI 470E 5% 0.4W 4X1.6MM
R153		036-14100-00	RES M/F 0805 CHIP 1K 5%	R318	7XX	030-52470-20	RES FILM AI 47E 5% 0.4W 4X1.6MM
RV153		042-05470-07	RES PRESET 47K CARBON 6MM FLAT DUAL AD	R318	9XX	030-53220-20	RES FILM AI 220E 5% 0.4W 4X1.6MM
R155		036-16100-00	RES M/F 0805 CHIP 100K 5%	R319	7XX	030-52470-20	RES FILM AI 47E 5% 0.4W 4X1.6MM
R156		036-13100-00	RES M/F 0805 CHIP 100E 5%	R319	9XX	030-53220-20	RES FILM AI 220E 5% 0.4W 4X1.6MM
R157		036-15100-00	RES M/F 0805 CHIP 10K 5%	R320		030-55270-20	RES FILM AI 27K 5% 0.4W 4X1.6MM
R158		036-14100-00	RES M/F 0805 CHIP 1K 5%	R321		036-16470-00	RES M/F 0805 CHIP 470K 5%
R159		036-12470-00	RES M/F 0805 CHIP 47E 5%	R322		030-02100-00	RES FILM 10E 5% 0.25W 7X2.5MM
R160		036-12100-00	RES M/F 0805 CHIP 10E 5%	RV324		042-06470-06	RES PRESET 470/500K 25% 6MM ROUND TOP
R161		036-14100-00	RES M/F 0805 CHIP 1K 5%	R325		030-55270-20	RES FILM AI 27K 5% 0.4W 4X1.6MM
R194		036-10000-00	RES M/F 0805 CHIP ZERO OHM	R326		036-16220-00	RES M/F 0805 CHIP 220K 5%
R195		036-15680-00	RES M/F 0805 CHIP 68K 5%	R327		036-14100-00	RES M/F 0805 CHIP 1K 5%
R196		036-13100-00	RES M/F 0805 CHIP 100E 5%	R328		030-53150-20	RES FILM AI 150E 5% 0.4W 4X1.6MM
R197		036-13100-00	RES M/F 0805 CHIP 100E 5%	R329		036-15470-00	RES M/F 0805 CHIP 47K 5%
R198		036-14220-00	RES M/F 0805 CHIP 2K2 5%	R330		036-16220-00	RES M/F 0805 CHIP 220K 5%
R199		036-13100-00	RES M/F 0805 CHIP 100E 5%	R332		036-13100-00	RES M/F 0805 CHIP 100E 5%
R213		036-13330-00	RES M/F 0805 CHIP 330E 5%	R333		036-14220-00	RES M/F 0805 CHIP 2K2 5%
R214		036-14120-00	RES M/F 0805 CHIP 1K2 5%	R337		036-10000-00	RES M/F 0805 CHIP ZERO OHM
R217		036-12470-00	RES M/F 0805 CHIP 47E 5%	R418		036-13680-00	RES M/F 0805 CHIP 680E 5%
R218		036-15120-00	RES M/F 0805 CHIP 12K 5%	R420		036-15270-00	RES M/F 0805 CHIP 27K 5%
R219		036-13270-00	RES M/F 0805 CHIP 270E 5%	R421		036-15270-00	RES M/F 0805 CHIP 27K 5%
R220		036-14680-00	RES M/F 0805 CHIP 6K8 5%	R422		036-12220-00	RES M/F 0805 CHIP 22E 5%
R221		036-13330-00	RES M/F 0805 CHIP 330E 5%	R425		036-14100-00	RES M/F 0805 CHIP 1K 5%
R222		036-12470-00	RES M/F 0805 CHIP 47E 5%	R426		036-11470-00	RES M/F 0805 CHIP 4E7 10%
RV222		042-05470-07	RES PRESET 47K CARBON 6MM FLAT DUAL AD	R427		036-11470-00	RES M/F 0805 CHIP 4E7 10%
R223		036-15220-00	RES M/F 0805 CHIP 22K 5%	R428		036-12220-00	RES M/F 0805 CHIP 22E 5%
R224		036-15330-00	RES M/F 0805 CHIP 33K 5%	R429		036-15270-00	RES M/F 0805 CHIP 27K 5%
R225		036-15220-00	RES M/F 0805 CHIP 22K 5%	R430		036-14680-00	RES M/F 0805 CHIP 6K8 5%
R226		036-15150-00	RES M/F 0805 CHIP 15K 5%	R431		036-16100-00	RES M/F 0805 CHIP 100K 5%
R227		036-13560-00	RES M/F 0805 CHIP 560E 5%	R432		036-12100-00	RES M/F 0805 CHIP 10E 5%
R228		036-14330-00	RES M/F 0805 CHIP 3K3 5%	R433		036-13100-00	RES M/F 0805 CHIP 100E 5%
R229		036-12220-00	RES M/F 0805 CHIP 22E 5%	R434		036-12470-00	RES M/F 0805 CHIP 47E 5%
R230		036-13390-00	RES M/F 0805 CHIP 390E 5%	R437		036-14100-00	RES M/F 0805 CHIP 1K 5%
R231		036-13180-00	RES M/F 0805 CHIP 180E 5%		Variants:	7XX	330-380MHZ
R232		036-14220-00	RES M/F 0805 CHIP 2K2 5%			9XX	360-400MHZ
R233		036-17100-00	RES M/F 0805 CHIP 1M 5%				

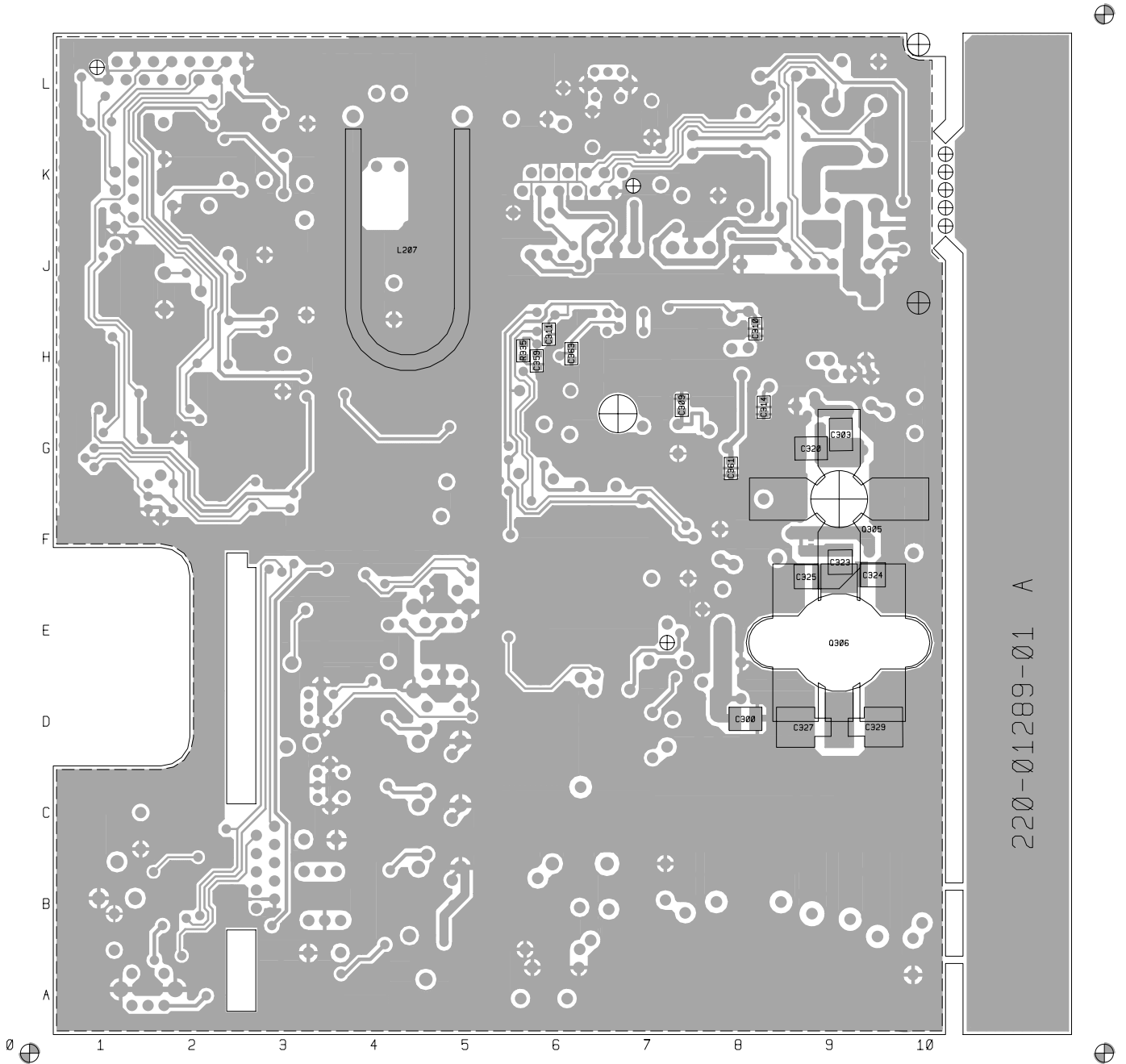
T2000-700/-900 Mechanical & Miscellaneous Parts

IPN	Description	IPN	Description
005-10000-10	TEST POINT SMD 0805 2.0 X 1.25 X 1.45		
062-00010-14	CAN 7.5MM SQ X 10.2MM TOKO MC-136 CANS TO BE PLACED OVER L107 L108		
065-00010-11	BEAD FERRITE 4S3 3*1*4MM RED L1, L307, L309, L314, L316, L304, L304A		
200-00010-05	WIRE T/C 0.5MM		
205-00010-12	CABLE FLAT RBBN 16 CORE 16/7/0.1 GREY		
220-01289-01	PCB T2000 330-380MHZ RF BRD		
240-00020-51	PLUG 12 WAY 2*6 FLAT CABLE TERMN		
240-00020-54	PLUG 16 WAY 2X8 FLAT CABLE TERMN MICROMATCH		
240-02100-11	SKT COAX BNC 3.5MM PNL NO EARTH TAG		
303-23135-01	COVER BTTM A1M2505 T2000 PNTD CMPLT		
303-50077-00	CLIP A3M2525 T2000 AUDIO IC AND REG		
308-13103-01	CHASSIS A1M2503 D-CAST T2000 PNTD CMPLT		
316-85094-00	PLATE A4M2160 BNC MTG UK 5X5 SERIES		
319-01164-01	SHIELD A1M2507 DIE CAST T2000 MICROP		
319-01167-00	SHIELD RX A3M2594 T2000		
349-00020-30	SCREW TAPTITE M3X6MM PAN POZI BZ		
349-00020-31	SCREW TAPTITE M3X10MM PAN POZI BZ		
349-00020-32	SCREW TAPTITE M3X8MM PAN POZI BZ Q306 =2 BNC PLATE =2 CHASSIS =2		
349-00020-34	SCREW M3*12 PAN POZI TAPTITE BZ		
349-00020-48	SCREW M4X25MM PAN POZI TAPTITE II BRIGHT ZINC		
349-00020-49	SCREW TAPTITE M4X35MM PAN POZI BZ TOP COVER		
352-00010-35	NUT 8-32 UNC HEX RF PWR XSTR MTG NUT FOR Q305		
356-00010-05	TAG SOLDER 4MM LONG M6144/4.2		
360-01053-01	PLUG A3M2563 PLASTIC D-RANGE BLANKING		
362-01027-01	GASKET A4M2564 RUBBER SEAL T2000 MAIN CONN		
362-01028-00	GASKET A4M2652 130X3MM CONDUCT STRIPS T2000		
362-01058-00	GASKET TO-126 11.1X7.9 D2.4 SIL INSULATION		

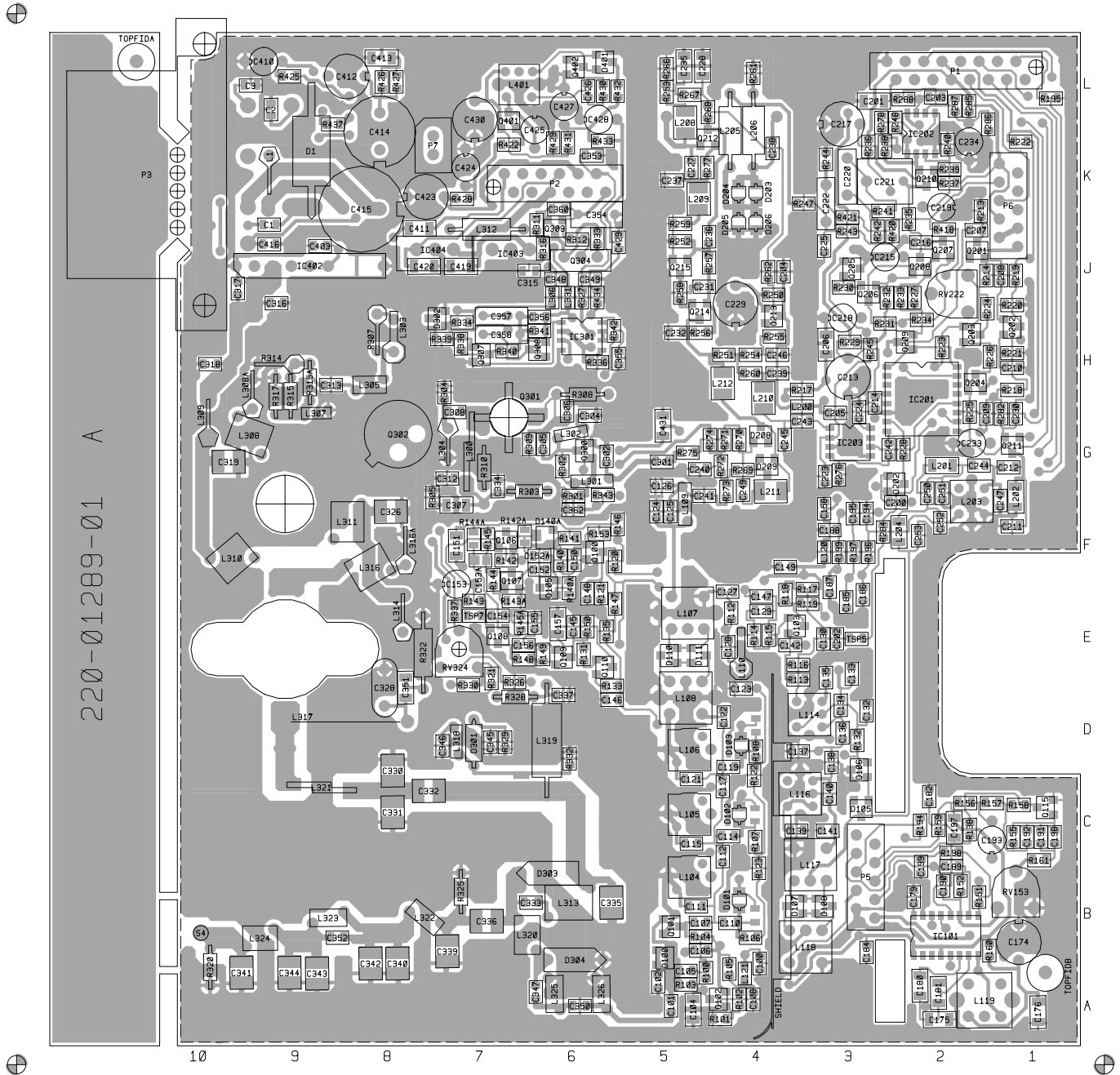
T2000-700/-900 Grid Reference Index (IPN 220-01289-01)

Device	PCB	Circuit	Device	PCB	Circuit	Device	PCB	Circuit	Device	PCB	Circuit
C1	1:J9	1-V9	C193	1:C1	1-N7	C315	1:J6	1-L1	D105	1:C3	1-T6
C2	1:L9	1-U8	C194	1:F3	1-A7	C316	1:J9	1-P1	D106	1:D3	1-T6
C3	1:L10	1-V8	C195	1:F3	1-A8	C317	1:J10	1-P1	D107	1:B4	1-S6
C100	1:A4	1-U3	C197	1:C2	1-O7	C318	1:H10	1-M1			1-S5
C101	1:A5	1-T3	C198	1:C1	1-M6	C319	1:G10	1-P1	D108	1:B3	1-S5
C102	1:A5	1-S2	C199	1:B2	1-M7	C320	2:G9	1-O0			1-S5
C104	1:A5	1-S3	C200	1:F3	1-B5	C321	2:G9	1-O0	D110	1:E5	1-K3
C105	1:A5	1-S3	C201	1:L3	1-B4	C323	2:F9	1-P0			1-K3
C106	1:B5	1-R3	C202	1:E3	1-J3	C324	2:F10	1-P0	D111	1:E5	1-K3
#C107	1:B5	1-R3	C203	1:L2	1-J4	C325	2:F9	1-P0			1-K2
C108	1:A4	1-T3	C204	1:J4	1-C2	C326	1:F8	1-P1	D140A	1:F6	1-P4
#C109		1-Q3	C205	1:G3	1-C2	C327	2:D9	1-Q0	D202	1:G3	1-C5
C110	1:B4	1-Q3	C206	1:H3	1-H5	C328	1:D8	1-Q1	D203	1:K4	1-A0
#C111	1:B5	1-P3	C207	1:J2	1-B6	C329	2:D9	1-R0	D204	1:K4	1-B0
#C112	1:C4	1-P3	C208	1:J1	1-B7	C330	1:C8	1-S0	D205	1:J4	1-A0
C114	1:C4	1-P3	C209	1:G2	1-C7	C331	1:C8	1-R0	D206	1:J4	1-B0
#C115	1:C5	1-O3	C210	1:H1	1-D6	C332	1:C8	1-R0	D208	1:G4	1-F0
#C117	1:C4	1-O3	C211	1:F1	1-E6	C333	1:B6	1-T1	D209	1:G4	1-F1
#C118		1-N3	C212	1:G1	1-F7	C334	1:G7	1-J1	D301	1:D7	1-S1
C119	1:D4	1-N3	C213	1:H3	1-D4	C335	1:B6	1-S0	D302	1:H7	1-M1
C121	1:C5	1-N2	C214	1:G3	1-C4	C336	1:B7	1-T0			1-M0
C122	1:D4	1-M3	C215	1:J3	1-E4	C337	1:D6	1-T1	D303	1:B6	1-S0
C123	1:D4	1-M3	C216	1:J2	1-E5	C339	1:B7	1-U0	D304	1:A6	1-T0
C124	1:F5	1-H2	C217	1:L3	1-F4	C340	1:A8	1-U0	D401	1:L6	1-P9
C125	1:F5	1-H2	C218	1:H3	1-F5	C341	1:A10	1-V0			1-P9
C126	1:G5	1-H2	C219	1:K2	1-G4	C342	1:A8	1-U0			
C127	1:E4	1-K5	C220	1:K3	1-G5	C343	1:A9	1-V0	IC101	1:B2	1-K6
C128	1:E4	1-L5	C221	1:K2	1-G5	C344	1:A9	1-V0			1-L7
C129	1:E4	1-M5	C222	1:J3	1-H3	C345	1:D7	1-R1			1-O7
C130	1:E3	1-M5	C223	1:G3	1-E3	C346	1:D7	1-R1	IC201	1:H2	1-B4
C132	1:D3	1-U6	C224	1:G3	1-E2	C347	1:A6	1-T1	IC202	1:K2	1-G4
C133	1:E3	1-O5	C225	1:J3	1-A0	C348	1:J6	1-U2			1-J4
C134	1:D3	1-O6	C227	1:K5	1-C0	C349	1:J6	1-V2	IC203	1:G3	1-E2
C135	1:E3	1-P5	C228	1:L5	1-D1	C350	1:A6	1-T1	IC301	1:H6	1-N1
C136	1:D3	1-P6	C229	1:J4	1-D1	C351	1:D8	1-P1	IC402	1:J9	1-S8
C137	1:D4	1-P5	C230	1:G1	1-E7	C352	1:B9	1-U0	IC403	1:J7	1-K9
C138	1:D3	1-P6	C231	1:J5	1-E1	C353	1:K6	1-V2	IC404	1:J8	1-K8
C139	1:C4	1-Q5	C232	1:H5	1-F1	C354	1:K6	1-U2			
C140	1:C3	1-Q6	C233	1:G2	1-C7	C355	1:H6	1-N1	L1	1:K9	1-U9
C141	1:C3	1-Q5	C234	1:K2	1-I3	C356	1:H6	1-K2	L104	1:B5	1-Q2
C142	1:E4	1-L5	C235	1:L5	1-C1	C357	1:H7	1-K1	L105	1:C5	1-P2
C145	1:E6	1-T4	C236	1:J5	1-D0	C358	1:H7	1-K1	L106	1:D5	1-N2
C146	1:D6	1-U4	C237	1:K5	1-C0	C359	2:H6	1-N1	L107	1:E5	1-J3
C147	1:E4	1-N5	C238	1:K4	1-B0	C360	1:K6	1-K1	L108	1:D5	1-L3
C148	1:E6	1-O4	C239	1:H4	1-F2	C361	2:G8	1-L0	L109	1:F5	1-H3
C149	1:F4	1-L4	C240	1:G5	1-G1	C362	1:F6	1-M1	L110	1:E4	1-L5
C150	1:F6	1-O4	C241	1:F5	1-G2	C363	2:H6	1-N1	L114	1:D3	1-P5
C151	1:F7	1-Q5	C242	1:G3	1-B3	C403	1:J9	1-S8	L116	1:C4	1-Q5
C152	1:F6	1-Q4	C243	1:G4	1-E3	C410	1:L9	1-S9	L117	1:B3	1-R5
C152A	1:F6	1-P4	C244	1:G2	1-F7	C411	1:J8	1-T8	L118	1:B3	1-T5
C153	1:F7	1-Q4	C245	1:G4	1-F2	C412	1:L8	1-T9	L119	1:A2	1-K8
C153A	1:F7	1-R4	C246	1:H4	1-E2	C413	1:L8	1-T8	L120	1:F3	1-L4
C154	1:E7	1-S4	C247	1:F1	1-F6	C414	1:K8	1-U9	L121	1:A4	1-T3
C155	1:E6	1-S4	C249	1:G4	1-G0	C415	1:K8	1-U9	L200	1:G4	1-C2
C156	1:E7	1-S4	C250	1:G2	1-G7	C416	1:J9	1-U8	L201	1:G2	1-G7
C157	1:E6	1-T5	C251	1:G2	1-G6	C419	1:J7	1-J8	L202	1:F1	1-E6
C158	1:F3	1-K4	C252	1:F2	1-G6	C420	1:J8	1-K8	L203	1:F2	1-F6
C174	1:B1	1-J8	C253	1:F2	1-H6	C423	1:K8	1-K9	L204	1:F2	1-H7
C175	1:A2	1-K8	C300	2:D8	1-P1	C424	1:K7	1-L9	L205	1:K4	1-A0
C176	1:A1	1-K8	C301	1:G5	1-H0	C425	1:K6	1-N8	L206	1:L4	1-B0
C179	1:B2	1-M7	C302	1:G6	1-H0	C426	1:L6	1-O9	L207	2:L5	1-C0
C180	1:A2	1-L8	C303	2:G9	1-N0	C427	1:L6	1-P8	L208	1:L5	1-C1
C181	1:A2	1-L7	C304	1:G6	1-H0	C428	1:L6	1-Q8	L209	1:K5	1-D0
C182	1:C2	1-N6	C305	1:G6	1-I0	C429	1:J6	1-P8	L210	1:H4	1-F2
C184	1:B3	1-M8	C306	1:G6	1-I0	C430	1:L7	1-M9	L211	1:G4	1-G0
C185	1:E3	1-I6	C307	1:F7	1-I1	C431	1:G5	1-R8	L212	1:H4	1-F1
C186	1:E3	1-J7	C308	1:G7	1-K0				L300	1:G7	1-J0
C187	1:E3	1-N8	C309	2:G7	1-K0	D1	1:K9	1-V9	L301	1:G6	1-H0
C188	1:F3	1-A6	C310	2:H8	1-M1	D100	1:A5	1-S2	L302	1:G6	1-I0
C189	1:B2	1-K6	C311	2:H6	1-T2			1-S2	L303	1:H8	1-L1
C190	1:B2	1-K7	C312	1:G7	1-K1	D101	1:B4	1-Q3	L304	1:G7	1-L0
C191	1:C1	1-M6	C313	1:H9	1-M0	D102	1:C4	1-P3	L305	1:H8	1-L0
C192	1:C1	1-M7	C314	2:G8	1-L0	D103	1:D4	1-N3	L306	1:J6	1-L1

Device	PCB	Circuit	Device	PCB	Circuit	Device	PCB	Circuit	Device	PCB	Circuit
L307	1:G9	1-M0			1-V7	R145A	1:E7	1-R4	R272	1:G4	1-G1
L308	1:G10	1-N0				R146	1:F6	1-R5	R273	1:G4	1-G2
L308A	1:G9	1-N0	Q100	1:F6	1-O4	R147	1:E6	1-S5	R274	1:G5	1-H1
L309	1:G10	1-O1	Q101	1:B5	1-R3	R148	1:E7	1-S5	R275	1:G5	1-G0
L310	1:F9	1-O1	Q102	1:A4	1-S3	R149	1:E6	1-T5	R276	1:G3	1-B2
L311	1:F8	1-O1	Q103	1:E4	1-M5	R150	1:E6	1-T4	R277	1:K5	1-D0
L312	1:J7	1-L2	Q105	1:E6	1-P4	R151	1:B2	1-K7	R278	1:L3	1-I4
L313	1:B6	1-S1	Q106	1:F7	1-P4	R152	1:B2	1-K6	R282	1:G1	1-E7
L314	1:E8	1-P1	Q107	1:F7	1-R4	RV153	1:B1	1-L6	R284	1:F3	1-J3
L316	1:F8	1-Q0	Q108	1:E7	1-S4	R153	1:F6	1-O4	R285	1:L2	1-I4
L316A	1:F8	1-Q0	Q109	1:E6	1-T4	R155	1:C1	1-N7	R286	1:L2	1-I3
L317	1:D9	1-Q1	Q110	1:E6	1-U4	R156	1:C2	1-N8	R287	1:L2	1-J4
L318	1:D7	1-R1	Q115	1:C1	1-N6	R157	1:C1	1-N7	R288	1:L2	1-J4
L319	1:C6	1-S1	Q201	1:J2	1-B7	R158	1:C1	1-N7	R301	1:F6	1-I0
L320	1:B6	1-S0	Q202	1:H1	1-D7	R159	1:C2	1-P8	R302	1:G6	1-I0
L321	1:C8	1-R0	Q203	1:H2	1-C5	R160	1:B2	1-L8	R303	1:G7	1-I1
L322	1:B8	1-U0	Q204	1:H2	1-C5	R161	1:C1	1-M6	R304	1:H7	1-K0
L323	1:B9	1-U0	Q205	1:J3	1-D4	R194	1:C2	1-O6	R305	1:F8	1-I1
L324	1:B10	1-V0	Q206	1:J3	1-D5	R195	1:L1	1-A7	R307	1:H8	1-L1
L325	1:A6	1-T1	Q207	1:J2	1-E5	R196	1:F3	1-J7	R308	1:H6	1-J0
L326	1:A6	1-T1	Q208	1:J2	1-E5	R197	1:F3	1-I7	R309	1:G6	1-J0
L331	1:J6	1-U2	Q209	1:H2	1-E4	R198	1:C2	1-M7	R310	1:G7	1-K0
L401	1:L7	1-N9	Q210	1:K2	1-F4	R199	1:F3	1-J9	R311	1:J6	1-K1
			Q211	1:G1	1-E7	R213	1:K2	1-B6	R312	1:J6	1-L1
P1	1:L1	1-A4	Q212	1:K5	1-D0	R214	1:J2	1-B7	R314	1:H9	1-M0
		1-A5	Q213	1:H4	1-D1	R217	1:H4	1-H5	R315	1:H9	1-M0
		1-A5	Q214	1:H5	1-F1	R218	1:H1	1-C7	R315A	1:H9	1-M0
		1-A5	Q215	1:J5	1-F0	R219	1:J1	1-D7	R316	1:J6	1-K1
		1-A6	Q300	1:G6	1-I0	R220	1:J1	1-D6	R317	1:G9	1-M0
		1-A5	Q301	1:G7	1-J0	R221	1:H1	1-D6	R318	2:G9	1-N0
		1-A4	Q302	1:G8	1-L0	RV222	1:J2	1-C6	R319	2:G9	1-N0
		1-A6	Q303	1:J6	1-K1	R222	1:K1	1-E7	R320	1:B10	1-W0
		1-A4	Q304	1:J6	1-L1	R223	1:H2	1-B5	R321	1:D7	1-R1
		1-A6	Q305	2:F9	1-O0	R224	1:J2	1-C6	R322	1:D8	1-P1
		1-A7	Q306	2:E9	1-Q0	R225	1:G2	1-B5	RV324	1:E7	1-R2
		1-A4	Q307	1:H7	1-O1	R226	1:H1	1-C5	R325	1:B7	1-T0
		1-A5	Q308	1:H6	1-J2	R227	1:J2	1-E4	R326	1:D7	1-R2
		1-A6	Q401	1:L7	1-N9	R228	1:G2	1-C5	R327	1:J6	1-S2
		1-A5	Q402	1:L6	1-O9	R229	1:H3	1-D4	R328	1:D7	1-S2
		1-A6				R230	1:J3	1-D4	R329	1:D7	1-R1
P2	1:K7	1-W2	R100	1:A5	1-R3	R231	1:H3	1-D5	R330	1:D7	1-S1
		1-W3	R101	1:A4	1-S3	R232	1:J3	1-D5	R332	1:D6	1-S1
		1-W3	R102	1:A4	1-S3	R233	1:J2	1-E4	R333	1:J6	1-L2
		1-W3	R103	1:A5	1-S3	R234	1:H2	1-E5	R334	1:H7	1-M1
		1-W2	R104	1:B5	1-R3	R235	1:J2	1-F5	R335	2:H6	1-M1
		1-W2	R105	1:A4	1-S3	R236	1:K3	1-F5	R336	1:H6	1-M1
		1-W4	R106	1:B4	1-Q3	R237	1:K2	1-F5	R337	1:E7	1-S2
		1-W3	R107	1:C4	1-P3	R238	1:K3	1-F4	R338	1:H7	1-N1
		1-W4	R108	1:D4	1-O3	R239	1:K2	1-F4	R339	1:H7	1-O1
		1-W3	R112	1:E4	1-K5	R240	1:K2	1-G4	R340	1:H7	1-O1
		1-W2	R113	1:D4	1-M5	R241	1:K3	1-G5	R341	1:H6	1-O2
		1-W2	R114	1:E4	1-L5	R242	1:J3	1-H4	R342	1:H6	1-N1
P3	1:L10	1-V9	R115	1:E4	1-M5	R243	1:J3	1-H3	R343	1:F6	1-M2
		1-V8	R116	1:E4	1-M5	R244	1:K3	1-I3	R418	1:J2	1-G6
		1-V9	R117	1:E3	1-L6	R245	1:H3	1-D3	R420	1:J3	1-H4
		1-V9	R118	1:E4	1-M6	R247	1:K4	1-A0	R421	1:J3	1-I3
		1-V8	R119	1:E3	1-O6	R248	1:L3	1-H4	R422	1:K7	1-L9
		1-V8	R120	1:F6	1-N4	R250	1:J4	1-D2	R425	1:L9	1-S9
		1-V9	R121	1:E6	1-N4	R251	1:H4	1-F1	R426	1:L8	1-T8
P5	1:B3	1-P8	R122	1:C4	1-P3	R252	1:J5	1-D0	R427	1:L8	1-T8
		1-P8	R123	1:B4	1-Q3	R253	1:L5	1-C1	R428	1:K7	1-L9
		1-P6	R131	1:E6	1-T4	R254	1:H4	1-E2	R429	1:K6	1-M8
		1-P6	R132	1:D3	1-U6	R255	1:H4	1-E2	R430	1:L6	1-O9
		1-T6	R133	1:D6	1-U4	R256	1:H5	1-E1	R431	1:K6	1-O8
		1-T7	R135	1:E6	1-U4	R257	1:J5	1-E0	R432	1:L6	1-P9
		1-P7	R138	1:C2	1-N6	R258	1:J5	1-F0	R433	1:K6	1-P9
		1-P7	R140	1:F6	1-O4	R259	1:J5	1-D0	R434	1:J6	1-Q9
P6	1:J1	1-H9	R140A	1:E6	1-O4	R260	1:H4	1-F2	R437	1:L9	1-V6
		1-H8	R141	1:F6	1-O4	R261	1:L4	1-B0			
		1-C9	R142	1:F7	1-R4	R262	1:J4	1-D1	S4	1:B10	1-W0
		1-C8	R142A	1:F7	1-P4	R266	1:L5	1-C1			
		1-H8	R143	1:E7	1-S4	R267	1:L5	1-D1	TSP5	1:E3	1-M4
		1-C9	R143A	1:E7	1-Q4	R268	1:L5	1-D1	TSP7	1:E7	1-S4
		1-H8	R144	1:F7	1-Q4	R269	1:G4	1-G1			
		1-C8	R144A	1:F7	1-R4	R270	1:G4	1-G0			
P7	1:K8	1-V7	R145	1:F7	1-Q4	R271	1:G4	1-G0			



T2000-700/-900 RF PCB (IPN 220-01289-01) - Bottom Side



T2000-700/-900 RF PCB (IPN 220-01289-01) - Top Side

7.6 T2000-700/-900 RF PCB

T2000-700/-900 Parts List (IPN 220-01289-03)

Parts List Amendments			
-----------------------	--	--	--

Ref	Var	IPN	Description	Ref	Var	IPN	Description
C1		015-24100-08	CAP CER 0805 CHIP 1N 10% X7R 50V	C191		015-24100-08	CAP CER 0805 CHIP 1N 10% X7R 50V
C2		015-24100-08	CAP CER 0805 CHIP 1N 10% X7R 50V	C192		015-22330-01	CAP CER 0805 CHIP 33P 5% NPO 50V
C3		015-24100-08	CAP CER 0805 CHIP 1N 10% X7R 50V	C193		020-57470-10	CAP ELECT AI RDL 4U7 50V LO ESR
C100		015-23150-01	CAP CER 0805 CHIP 150P 5% NPO 50V	C194		015-23150-01	CAP CER 0805 CHIP 150P 5% NPO 50V
C101		015-22120-01	CAP CER 0805 CHIP 12P 5% NPO 50V	C195		015-23150-01	CAP CER 0805 CHIP 150P 5% NPO 50V
C102		015-23150-01	CAP CER 0805 CHIP 150P 5% NPO 50V	C197		015-06100-08	CAP CER 1206 CHIP 100N 10% X7R 50V
C104		015-06100-08	CAP CER 1206 CHIP 100N 10% X7R 50V	C198		015-23220-01	CAP CER 0805 CHIP 220P 5% NPO 50V
C105		015-21100-01	CAP CER 0805 CHIP 1P0 +/-0.25P NPO 50V	C199		015-24100-08	CAP CER 0805 CHIP 1N 10% X7R 50V
C106		015-22330-01	CAP CER 0805 CHIP 33P 5% NPO 50V	C200		015-25100-08	CAP CER 0805 CHIP 10N 10% X7R 50V
#C107	7XX	015-21560-01	CAP CER 0805 CHIP 5P6 +/-0.25P NPO	C201		015-06100-08	CAP CER 1206 CHIP 100N 10% X7R 50V
#C107	9XX	015-21470-01	CAP CER 0805 CHIP 4P7 +/-0.25P NPO	C202		015-25100-08	CAP CER 0805 CHIP 10N 10% X7R 50V
C108		015-23150-01	CAP CER 0805 CHIP 150P 5% NPO 50V	C203		015-22560-01	CAP CER 0805 CHIP 56P 5% NPO 50V
#C109	9XX	015-21820-01	CAP CER 0805 CHIP 8P2 +/-0.25P NPO	C204		015-23150-01	CAP CER 0805 CHIP 150P 5% NPO 50V
C110		015-22470-01	CAP CER 0805 CHIP 47P 5% NPO 50V	C205		015-25220-08	CAP CER 0805 CHIP 22N 10% X7R 50V
C111		015-21560-01	CAP CER 0805 CHIP 5P6 +/-0.25P NPO 50V	C206		015-06100-08	CAP CER 1206 CHIP 100N 10% X7R 50V
#C112	7XX	015-21120-01	CAP CER 0805 CHIP 1P2 +/-0.25 NPO 5	C207		015-25100-08	CAP CER 0805 CHIP 10N 10% X7R 50V
#C112	9XX	015-21150-01	CAP CER 0805 CHIP 1P5 +/-0.25P NPO	C208		015-24100-08	CAP CER 0805 CHIP 1N 10% X7R 50V
#C113	9XX	015-21820-01	CAP CER 0805 CHIP 8P2 +/-0.25P NPO	C209		015-25100-08	CAP CER 0805 CHIP 10N 10% X7R 50V
C114		015-22470-01	CAP CER 0805 CHIP 47P 5% NPO 50V	C210		015-25100-08	CAP CER 0805 CHIP 10N 10% X7R 50V
#C115	7XX	015-21820-01	CAP CER 0805 CHIP 8P2 +/-0.25P NPO	C211		015-23180-01	CAP CER 0805 CHIP 180P 5% NPO 50V
#C115	9XX	015-22120-01	CAP CER 0805 CHIP 12P 5% NPO 50V	C212		015-21560-01	CAP CER 0805 CHIP 5P6 +/-0.25P NPO
#C117	7XX	015-2120-01	CAP CER 0805 CHIP 1P2 +/-0.25 NPO 5	C213		020-58470-05	CAP ELECT AI RDL 4U7 50V LO ESR
#C117	9XX	015-21150-01	CAP CER 0805 CHIP 1P5 +/-0.25P NPO	C214		015-23150-01	CAP CER 0805 CHIP 150P 5% NPO 50V
#C118	9XX	015-21820-01	CAP CER 0805 CHIP 8P2 +/-0.25P NPO	C215		020-57470-10	CAP ELECT AI RDL 4U7 50V LO ESR
C119		015-22470-01	CAP CER 0805 CHIP 47P 5% NPO 50V	C216		015-25100-08	CAP CER 0805 CHIP 10N 10% X7R 50V
#C121	7XX	015-21560-01	CAP CER 0805 CHIP 5P6 +/-0.25P NPO	C217		020-58470-05	CAP ELECT AI RDL 4U7 50V LO ESR
#C121	9XX	015-22100-01	CAP CER 0805 CHIP 10P +/-0.5P NPO 5	C218		020-57470-10	CAP ELECT AI RDL 4U7 50V LO ESR
#C122	7XX	015-21560-01	CAP CER 0805 CHIP 5P6 +/-0.25P NPO	C219		020-57470-10	CAP ELECT AI RDL 4U7 50V LO ESR
#C122	9XX	015-22100-01	CAP CER 0805 CHIP 10P +/-0.5P NPO 5	C220		022-55100-10	CAP MYLAR AI 10N 5% 63V POTTED
C123		015-23150-01	CAP CER 0805 CHIP 150P 5% NPO 50V	C221		022-57100-02	CAP MYLAR AI 1M 20% 50V POTTED
C124		015-21680-01	CAP CER 0805 CHIP 6P8 +/-0.25P NPO 50V	C222		022-06100-15	CAP MET POLYSTR 100N 5% 50V 5.6MM HI
C125		015-21330-01	CAP CER 0805 CHIP 3P3 +/-0.25P NPO 50V	C223		015-23150-01	CAP CER 0805 CHIP 150P 5% NPO 50V
C126		015-21560-01	CAP CER 0805 CHIP 5P6 +/-0.25P NPO 50V	C224		015-24100-08	CAP CER 0805 CHIP 1N 10% X7R 50V
C127		015-22120-01	CAP CER 0805 CHIP 12P 5% NPO 50V	C225		015-23270-01	CAP CER 0805 CHIP 270P 5% NPO 50V
C128		015-22330-01	CAP CER 0805 CHIP 33P 5% NPO 50V	C227		015-22270-01	CAP CER 0805 CHIP 27P 5% NPO 50V
C129		015-25100-08	CAP CER 0805 CHIP 10N 10% X7R 50V	C228		015-06100-08	CAP CER 1206 CHIP 100N 10% X7R 50V
C130		015-25100-08	CAP CER 0805 CHIP 10N 10% X7R 50V	C229		020-58470-05	CAP ELECT AI RDL 4U7 50V LO ESR
C132		015-23150-01	CAP CER 0805 CHIP 150P 5% NPO 50V	C230		015-24470-08	CAP CER 0805 CHIP 4N7 10% X7R 50V
C133		015-22470-01	CAP CER 0805 CHIP 47P 5% NPO 50V	C231		015-23270-01	CAP CER 0805 CHIP 270P 5% NPO 50V
C134		015-21680-01	CAP CER 0805 CHIP 6P8 +/-0.25P NPO 50V	C232		015-21470-01	CAP CER 0805 CHIP 4P7 +/-0.25P NPO 50V
C135		015-22330-01	CAP CER 0805 CHIP 33P 5% NPO 50V	C233		020-57470-10	CAP ELECT AI RDL 4U7 50V LO ESR
C136		015-21680-01	CAP CER 0805 CHIP 6P8 +/-0.25P NPO 50V	C234		020-57470-10	CAP ELECT AI RDL 4U7 50V LO ESR
C137		015-23100-01	CAP CER 0805 CHIP 100P 5% NPO 50V	C235		015-06100-08	CAP CER 1206 CHIP 100N 10% X7R 50V
C138		015-21680-01	CAP CER 0805 CHIP 6P8 +/-0.25P NPO 50V	C236		015-23150-01	CAP CER 0805 CHIP 150P 5% NPO 50V
C139		015-22330-01	CAP CER 0805 CHIP 33P 5% NPO 50V	C237		015-22270-01	CAP CER 0805 CHIP 27P 5% NPO 50V
C140		015-21680-01	CAP CER 0805 CHIP 6P8 +/-0.25P NPO 50V	C238		015-22470-01	CAP CER 0805 CHIP 47P 5% NPO 50V
C141		015-22470-01	CAP CER 0805 CHIP 47P 5% NPO 50V	C239		015-21100-01	CAP CER 0805 CHIP 1P0 +/-0.25P NPO 50V
C142		015-22120-01	CAP CER 0805 CHIP 12P 5% NPO 50V	C240		015-23270-01	CAP CER 0805 CHIP 270P 5% NPO 50V
C145		015-23100-01	CAP CER 0805 CHIP 100P 5% NPO 50V	C241		015-23270-01	CAP CER 0805 CHIP 270P 5% NPO 50V
C146		015-24100-08	CAP CER 0805 CHIP 1N 10% X7R 50V	C242		015-25100-08	CAP CER 0805 CHIP 10N 10% X7R 50V
C147		015-25100-08	CAP CER 0805 CHIP 10N 10% X7R 50V	C243		015-23150-01	CAP CER 0805 CHIP 150P 5% NPO 50V
C148		015-22100-01	CAP CER 0805 CHIP 10P +/-0.5P NPO 50V	C244		015-21560-01	CAP CER 0805 CHIP 5P6 +/-0.25P NPO 50V
C149		015-23150-01	CAP CER 0805 CHIP 150P 5% NPO 50V	C245		015-21270-01	CAP CER 0805 CHIP 2P7 +/-0.25P NPO 50V
C150		015-23100-01	CAP CER 0805 CHIP 100P 5% NPO 50V	C246		015-23150-01	CAP CER 0805 CHIP 150P 5% NPO 50V
C151		015-06100-08	CAP CER 1206 CHIP 100N 10% X7R 50V	C247		015-21820-01	CAP CER 0805 CHIP 8P2 +/-0.25P NPO 50V
C152		015-23100-01	CAP CER 0805 CHIP 100P 5% NPO 50V	C249		015-23270-01	CAP CER 0805 CHIP 270P 5% NPO 50V
C152A		015-25100-08	CAP CER 0805 CHIP 10N 10% X7R 50V	C250		015-22820-01	CAP CER 0805 CHIP 82P 5% NPO 50V
C153		020-57470-10	CAP ELECT AI RDL 4U7 50V LO ESR	C251		015-23100-01	CAP CER 0805 CHIP 100P 5% NPO 50V
C153A		015-23100-01	CAP CER 0805 CHIP 100P 5% NPO 50V	C252		015-23180-01	CAP CER 0805 CHIP 180P 5% NPO 50V
C154		015-25100-08	CAP CER 0805 CHIP 10N 10% X7R 50V	C253		015-22820-01	CAP CER 0805 CHIP 82P 5% NPO 50V
C155		015-23100-01	CAP CER 0805 CHIP 100P 5% NPO 50V	C300		015-03150-06	CAP CER 1210 CHIP 150P NPO 500V GRM42-2
C156		015-22220-01	CAP CER 0805 CHIP 22P 5% NPO 50V	#C301	7XX	015-23270-01	CAP CER 0805 CHIP 270P 5% NPO 50V
C157		015-06100-08	CAP CER 1206 CHIP 100N 10% X7R 50V	#C301	9XX	015-23220-01	CAP CER 0805 CHIP 220P 5% NPO 50V
C158		015-24100-08	CAP CER 0805 CHIP 1N 10% X7R 50V	#C302	7XX	015-21820-01	CAP CER 0805 CHIP 8P2 +/-0.25P NPO
C174		020-58470-05	CAP ELECT AI RDL 4U7 50V LO ESR	#C302	9XX	015-21680-01	CAP CER 0805 CHIP 6P8 +/-0.25P NPO
C175		015-06100-08	CAP CER 1206 CHIP 100N 10% X7R 50V	#C303	7XX	015-02150-06	CAP CER 1210 CHIP 15P NPO 500V GRM4
C176		015-06100-08	CAP CER 1206 CHIP 100N 10% X7R 50V	#C303	9XX	015-02180-06	CAP CER 1210 CHIP 18P NPO 500V GRM4
C179		015-25100-08	CAP CER 0805 CHIP 10N 10% X7R 50V	C304		015-24100-08	CAP CER 0805 CHIP 1N 10% X7R 50V
C180		015-06100-08	CAP CER 1206 CHIP 100N 10% X7R 50V	#C305	7XX	015-22150-01	CAP CER 0805 CHIP 15P 5% NPO 50V
C181		015-06100-08	CAP CER 1206 CHIP 100N 10% X7R 50V	#C305	9XX	015-22120-01	CAP CER 0805 CHIP 12P 5% NPO 50V
C182		015-23150-01	CAP CER 0805 CHIP 150P 5% NPO 50V	#C306	7XX	015-22270-01	CAP CER 0805 CHIP 27P 5% NPO 50V
C184		015-23150-01	CAP CER 0805 CHIP 150P 5% NPO 50V	#C306	9XX	015-22220-01	CAP CER 0805 CHIP 22P 5% NPO 50V
C185		015-25100-08	CAP CER 0805 CHIP 10N 10% X7R 50V	C307		015-06100-08	CAP CER 1206 CHIP 100N 10% X7R 50V
C186		015-25100-08	CAP CER 0805 CHIP 10N 10% X7R 50V	#C308	7XX	015-22470-01	CAP CER 0805 CHIP 47P 5% NPO 50V
C187		015-24100-08	CAP CER 0805 CHIP 1N 10% X7R 50V	#C308	9XX	015-22120-01	CAP CER 0805 CHIP 12P 5% NPO 50V
C188		015-23100-01	CAP CER 0805 CHIP 100P 5% NPO 50V	#C309	7XX	015-22560-01	CAP CER 0805 CHIP 56P 5% NPO 50V
C189		015-23470-08	CAP CER 0805 CHIP 470P 10% X7R 50V	#C309	9XX	015-22220-01	CAP CER 0805 CHIP 22P 5% NPO 50V
C190		015-23470-08	CAP CER 0805 CHIP 470P 10% X7R 50V	C310		015-24100-08	CAP CER 0805 CHIP 1N 10% X7R 50V

Ref	Var	IPN	Description	Ref	Var	IPN	Description
Q214		000-10057-10	(S) XSTR SMD MMBR571 NPN SOT-23 UHF LO	R238		036-14820-00	RES M/F 0805 CHIP 8K2 5%
Q215		000-10057-10	(S) XSTR SMD MMBR571 NPN SOT-23 UHF LO	R239		036-15220-00	RES M/F 0805 CHIP 22K 5%
Q300		000-10095-10	(S) XSTR SMD MMBR951 NPN UHF SOT-23	R240		036-16100-00	RES M/F 0805 CHIP 100K 5%
Q301		000-00032-47	(S) XSTR MRF559 NPN XPACK UHF PWR 0.5W	R241		036-14150-00	RES M/F 0805 CHIP 1K5 5%
Q302		000-00032-56	(S) XSTR MRF630 NPN TO-39 UHF PWR 3W	R242		036-12220-00	RES M/F 0805 CHIP 22E 5%
Q303		000-10008-48	(S) XSTR SMD BCW60/BC848B215 NPN SOT23	R243		036-14220-00	RES M/F 0805 CHIP 2K2 5%
Q304		000-00012-15	(S) XSTR BD234 PNP AF PWR TO126	R244		036-12220-00	RES M/F 0805 CHIP 22E 5%
Q305		000-00022-75	(S) XSTR SD1433-04 NPN STUD MTG UHF PWR	R245		036-12220-00	RES M/F 0805 CHIP 22E 5%
Q306		000-00032-65	(S) XSTR MRF646 NPN 6FL UHF PWR 45W	R247		036-12100-00	RES M/F 0805 CHIP 10E 5%
Q401		000-10008-57	(S) XSTR SMD BCW70 PNP SOT23 AF SML SIG	R248		036-10000-00	RES M/F 0805 CHIP ZERO OHM
Q402		000-10008-17	(S) XSTR SMD BC817-25 NPN SOT-23 AF LO	R250		036-14220-00	RES M/F 0805 CHIP 2K2 5%
Q403		000-10008-48	(S) XSTR SMD BCW60/BC848B215 NPN SOT23	R251		036-13150-00	RES M/F 0805 CHIP 150E 5%
Q404		000-10008-07	(S) XSTR SMD BC807 PNP SOT-23 AF LO PWR	R252		036-13820-00	RES M/F 0805 CHIP 820E 5%
Q405		000-10008-07	(S) XSTR SMD BC807 PNP SOT-23 AF LO PWR	R253		036-12470-00	RES M/F 0805 CHIP 47E 5%
				R254		036-12330-00	RES M/F 0805 CHIP 33E 5%
R100		036-13330-00	RES M/F 0805 CHIP 330E 5%	R255		036-12220-00	RES M/F 0805 CHIP 22E 5%
R101		036-14390-00	RES M/F 0805 CHIP 3K9 5%	R256		036-14150-00	RES M/F 0805 CHIP 1K5 5%
R102		036-13560-00	RES M/F 0805 CHIP 560E 5%	R257		036-14120-00	RES M/F 0805 CHIP 1K2 5%
R103		036-14220-00	RES M/F 0805 CHIP 2K2 5%	R258		036-12100-00	RES M/F 0805 CHIP 10E 5%
R104		036-13120-00	RES M/F 0805 CHIP 120E 5%	R259		036-13390-00	RES M/F 0805 CHIP 390E 5%
R105		036-12180-00	RES M/F 0805 CHIP 18E 5%	R260		036-12180-00	RES M/F 0805 CHIP 18E 5%
R106		036-16100-00	RES M/F 0805 CHIP 100K 5%	R261		036-12330-00	RES M/F 0805 CHIP 33E 5%
R107		036-16100-00	RES M/F 0805 CHIP 100K 5%	R262		036-12100-00	RES M/F 0805 CHIP 10E 5%
R108		036-16100-00	RES M/F 0805 CHIP 100K 5%	R266		036-14330-00	RES M/F 0805 CHIP 3K3 5%
R112		036-12470-00	RES M/F 0805 CHIP 47E 5%	R267		036-14330-00	RES M/F 0805 CHIP 3K3 5%
R113		036-11470-00	RES M/F 0805 CHIP 4E7 5%	R268		036-12560-00	RES M/F 0805 CHIP 56E 5%
R114		036-13820-00	RES M/F 0805 CHIP 820E 5%	R269		036-11470-00	RES M/F 0805 CHIP 4E7 5%
R115		036-15120-00	RES M/F 0805 CHIP 12K 5%	R270		036-11470-00	RES M/F 0805 CHIP 4E7 5%
R116		036-11470-00	RES M/F 0805 CHIP 4E7 5%	R271		036-13220-00	RES M/F 0805 CHIP 220E 5%
R117		036-12100-00	RES M/F 0805 CHIP 10E 5%	R272		036-13220-00	RES M/F 0805 CHIP 220E 5%
R118		036-13100-00	RES M/F 0805 CHIP 100E 5%	R273		036-11470-00	RES M/F 0805 CHIP 4E7 5%
R119		036-12100-00	RES M/F 0805 CHIP 10E 5%	R274		036-14390-00	RES M/F 0805 CHIP 3K9 5%
R120		036-13820-00	RES M/F 0805 CHIP 820E 5%	R275		036-11470-00	RES M/F 0805 CHIP 4E7 5%
R121		036-13180-00	RES M/F 0805 CHIP 180E 5%	R276		036-14220-00	RES M/F 0805 CHIP 2K2 5%
R122		036-15100-00	RES M/F 0805 CHIP 10K 5%	R277		036-12330-00	RES M/F 0805 CHIP 33E 5%
R123		036-15100-00	RES M/F 0805 CHIP 10K 5%	R278		036-16100-00	RES M/F 0805 CHIP 100K 5%
R131		036-13100-00	RES M/F 0805 CHIP 100E 5%	R282		036-13120-00	RES M/F 0805 CHIP 120E 5%
R132		036-14220-00	RES M/F 0805 CHIP 2K2 5%	R284		036-15100-00	RES M/F 0805 CHIP 10K 5%
R133		036-13270-00	RES M/F 0805 CHIP 270E 5%	R285		036-15100-00	RES M/F 0805 CHIP 10K 5%
R135		036-15100-00	RES M/F 0805 CHIP 10K 5%	R286		036-14100-00	RES M/F 0805 CHIP 1K 5%
R138		036-16100-00	RES M/F 0805 CHIP 100K 5%	R287		036-16100-00	RES M/F 0805 CHIP 100K 5%
R140		036-15680-00	RES M/F 0805 CHIP 68K 5%	R288		036-15390-00	RES M/F 0805 CHIP 39K 5%
R140A		036-15330-00	RES M/F 0805 CHIP 33K 5%	R301		036-13220-00	RES M/F 0805 CHIP 220E 5%
R141		036-14150-00	RES M/F 0805 CHIP 1K5 5%	R302		036-14100-00	RES M/F 0805 CHIP 1K 5%
R142		036-15270-00	RES M/F 0805 CHIP 27K 5%	R303		030-53270-20	RES FILM AI 270E 5% 0.4W 4X1.6MM
R142A		036-16100-00	RES M/F 0805 CHIP 100K 5%	R304		036-13100-00	RES M/F 0805 CHIP 100E 5%
R143		036-15330-00	RES M/F 0805 CHIP 33K 5%	R305		036-12100-00	RES M/F 0805 CHIP 10E 5%
R143A		036-15330-00	RES M/F 0805 CHIP 33K 5%	R307		030-03220-00	RES FILM 220E 5% 0.25W 7X2.5MM
R144		036-15680-00	RES M/F 0805 CHIP 68K 5%	R308		030-54120-20	RES FILM AI 1K2 5% 0.4W 4X1.6MM
R144A		036-16120-00	RES M/F 0805 CHIP 120K 5%	R309		036-12680-00	RES M/F 0805 CHIP 68E 5%
R145		036-14150-00	RES M/F 0805 CHIP 1K5 5%	R310		030-53180-20	RES FILM AI 180E 5% 0.4W 4X1.6MM
R145A		036-15330-00	RES M/F 0805 CHIP 33K 5%	R311		036-13180-00	RES M/F 0805 CHIP 180E 5%
R146		036-12220-00	RES M/F 0805 CHIP 22E 5%	R312		036-13680-00	RES M/F 0805 CHIP 680E 5%
R147		036-13220-00	RES M/F 0805 CHIP 220E 5%	R314		030-03470-00	RES FILM 470E 5% 0.25W 7X2.5MM
R148		036-13560-00	RES M/F 0805 CHIP 560E 5%	R315		030-52220-20	RES FILM AI 22E 5% 0.4W 4X1.6MM
R149		036-16100-00	RES M/F 0805 CHIP 100K 5%	R315A		030-52220-20	RES FILM AI 22E 5% 0.4W 4X1.6MM
R150		036-16100-00	RES M/F 0805 CHIP 100K 5%	R316		036-13150-00	RES M/F 0805 CHIP 150E 5%
R151		036-14330-00	RES M/F 0805 CHIP 3K3 5%	R317		030-53470-20	RES FILM AI 470E 5% 0.4W 4X1.6MM
R152		036-16390-00	RES M/F 0805 CHIP 390K 5%	R319		030-52470-20	RES FILM AI 47E 5% 0.4W 4X1.6MM
R153		036-14100-00	RES M/F 0805 CHIP 1K 5%	R319A		030-52470-20	RES FILM AI 47E 5% 0.4W 4X1.6MM
RV153		042-05470-07	RES PRESET 47K CARBON 6MM FLAT DUAL AD	R320		030-55270-20	RES FILM AI 27K 5% 0.4W 4X1.6MM
R155		036-16100-00	RES M/F 0805 CHIP 100K 5%	R321		036-16470-00	RES M/F 0805 CHIP 470K 5%
R156		036-13100-00	RES M/F 0805 CHIP 100E 5%	R322		030-02100-00	RES FILM 10E 5% 0.25W 7X2.5MM
R157		036-15100-00	RES M/F 0805 CHIP 10K 5%	RV324		042-06470-06	RES PRESET 470/500K 25% 6MM ROUND TOP
R158		036-14100-00	RES M/F 0805 CHIP 1K 5%	R325		030-55270-20	RES FILM AI 27K 5% 0.4W 4X1.6MM
R159		036-12470-00	RES M/F 0805 CHIP 47E 5%	R326		036-16220-00	RES M/F 0805 CHIP 220K 5%
R160		036-12100-00	RES M/F 0805 CHIP 10E 5%	R327		036-14100-00	RES M/F 0805 CHIP 1K 5%
R161		036-14100-00	RES M/F 0805 CHIP 1K 5%	R328		030-53150-20	RES FILM AI 150E 5% 0.4W 4X1.6MM
R194		036-10000-00	RES M/F 0805 CHIP ZERO OHM	R329		036-15470-00	RES M/F 0805 CHIP 47K 5%
R195		036-15680-00	RES M/F 0805 CHIP 68K 5%	R330		036-16220-00	RES M/F 0805 CHIP 220K 5%
R196		036-13100-00	RES M/F 0805 CHIP 100E 5%	R332		036-13100-00	RES M/F 0805 CHIP 100E 5%
R197		036-13100-00	RES M/F 0805 CHIP 100E 5%	R333		036-14220-00	RES M/F 0805 CHIP 2K2 5%
R198		036-14220-00	RES M/F 0805 CHIP 2K2 5%	R337		036-10000-00	RES M/F 0805 CHIP ZERO OHM
R199		036-13100-00	RES M/F 0805 CHIP 100E 5%	R418		036-13680-00	RES M/F 0805 CHIP 680E 5%
R213		036-13330-00	RES M/F 0805 CHIP 330E 5%	R420		036-15270-00	RES M/F 0805 CHIP 27K 5%
R214		036-14120-00	RES M/F 0805 CHIP 1K2 5%	R421		036-15270-00	RES M/F 0805 CHIP 27K 5%
R217		036-12470-00	RES M/F 0805 CHIP 47E 5%	R422		036-12220-00	RES M/F 0805 CHIP 22E 5%
R218		036-15120-00	RES M/F 0805 CHIP 12K 5%	R425		036-14100-00	RES M/F 0805 CHIP 1K 5%
R219		036-13270-00	RES M/F 0805 CHIP 270E 5%	R426		036-11470-00	RES M/F 0805 CHIP 4E7 5%
R220		036-14680-00	RES M/F 0805 CHIP 6K8 5%	R427		036-11470-00	RES M/F 0805 CHIP 4E7 5%
R221		036-13330-00	RES M/F 0805 CHIP 330E 5%	R428		036-12220-00	RES M/F 0805 CHIP 22E 5%
R222		036-12470-00	RES M/F 0805 CHIP 47E 5%	R429		036-15270-00	RES M/F 0805 CHIP 27K 5%
RV222		042-05470-07	RES PRESET 47K CARBON 6MM FLAT DUAL AD	R430		036-14680-00	RES M/F 0805 CHIP 6K8 5%
R223		036-15220-00	RES M/F 0805 CHIP 22K 5%	R431		036-16100-00	RES M/F 0805 CHIP 100K 5%
R224		036-15330-00	RES M/F 0805 CHIP 33K 5%	R432		036-12100-00	RES M/F 0805 CHIP 10E 5%
R225		036-15220-00	RES M/F 0805 CHIP 22K 5%	R433		036-13100-00	RES M/F 0805 CHIP 100E 5%
R226		036-15150-00	RES M/F 0805 CHIP 15K 5%	R434		036-12470-00	RES M/F 0805 CHIP 47E 5%
R227		036-13560-00	RES M/F 0805 CHIP 560E 5%	R437		036-14100-00	RES M/F 0805 CHIP 1K 5%
R228		036-14330-00	RES M/F 0805 CHIP 3K3 5%	R440		036-16270-00	RES M/F 0805 CHIP 270K 5%
R229		036-12220-00	RES M/F 0805 CHIP 22E 5%	R441		036-15560-00	RES M/F 0805 CHIP 56K 5%
R230		036-13390-00	RES M/F 0805 CHIP 390E 5%	R442		036-13220-00	RES M/F 0805 CHIP 220E 5%
R231		036-13180-00	RES M/F 0805 CHIP 180E 5%	R443		036-13680-00	RES M/F 0805 CHIP 680E 5%
R232		036-14220-00	RES M/F 0805 CHIP 2K2 5%	R444		036-15100-00	RES M/F 0805 CHIP 10K 5%
R233		036-17100-00	RES M/F 0805 CHIP 1M 5%	R445		036-14180-00	RES M/F 0805 CHIP 1K8 5%
R234		036-13180-00	RES M/F 0805 CHIP 180E 5%				
R235		036-13330-00	RES M/F 0805 CHIP 330E 5%				
R236		036-12470-00	RES M/F 0805 CHIP 47E 5%				
R237		036-13100-00	RES M/F 0805 CHIP 100E 5%				
				Variants:	7XX	330-380MHz	
					9XX	360-400MHz	

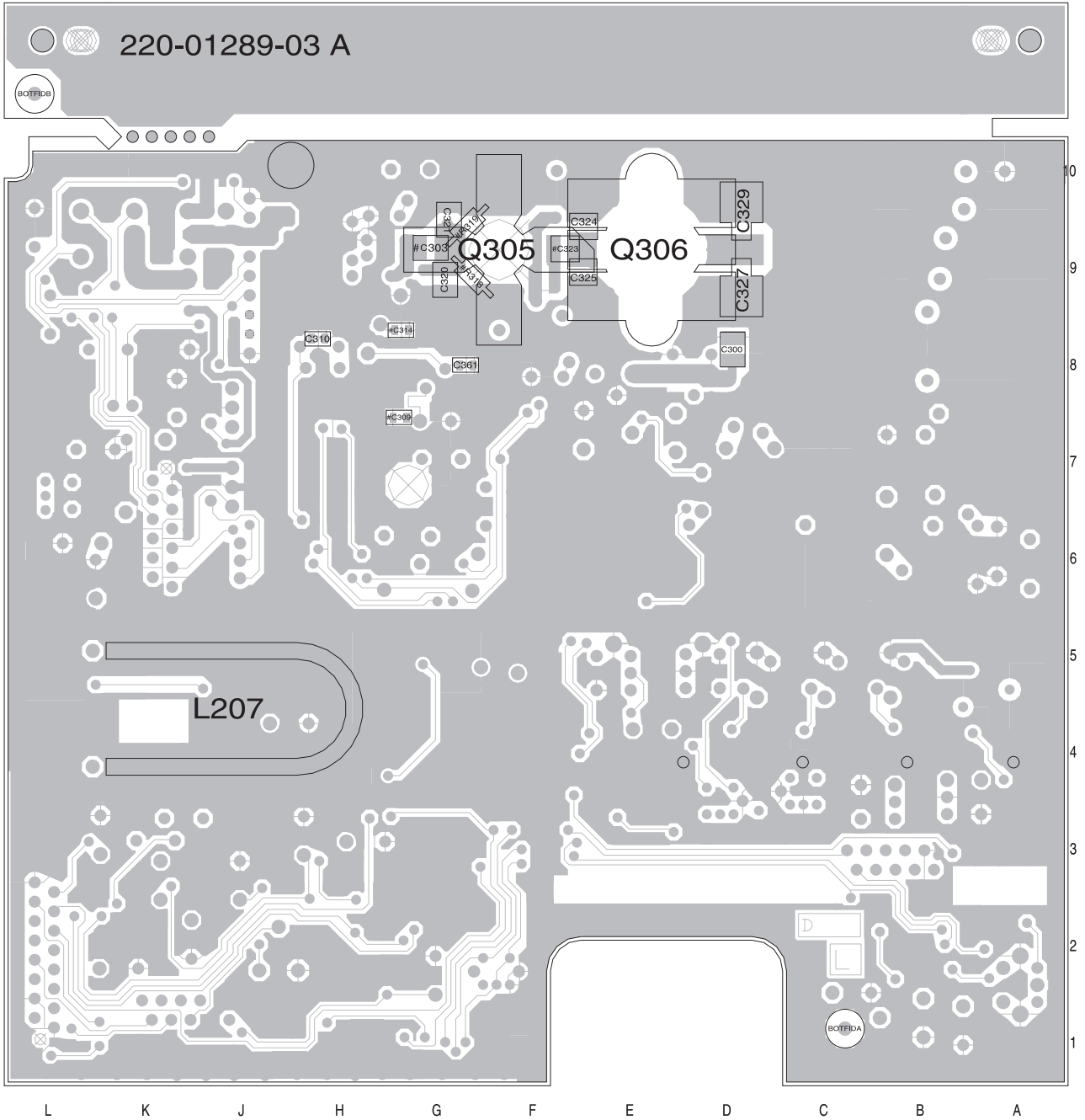
T2000-700/-900 Mechanical & Miscellaneous Parts

IPN	Description	IPN	Description
005-10000-10	TEST POINT SMD 0805 2.0 X 1.25 X 1.45		
062-00010-14	CAN 7.5MM SQ X 10.2MM TOKO MC-136 CANS TO BE PLACED OVER L107 L108		
065-00010-11	BEAD FERRITE 4S3 3*1*4MM RED L1, L307, L309, L314, L316, L304, L304A		
200-00010-05	WIRE T/C 0.5MM		
205-00010-12	CABLE FLAT RBBN 16 CORE 16/7/0.1 GREY		
220-01289-03	PCB T2000 330-380MHZ RF BRD		
240-00020-51	PLUG 12 WAY 2*6 FLAT CABLE TERMN		
240-00020-54	PLUG 16 WAY 2X8 FLAT CABLE TERMN MICROMATCH		
240-02100-11	SKT COAX BNC 3.5MM PNL NO EARTH TAG		
303-23135-02	COVER BTTM T2000 SII PNTD CMLPT		
303-50077-00	CLIP A3M2525 T2000 AUDIO IC AND REG		
308-13093-02	CHASSIS A1M2503 DIE CAST T2000 SERIES II		
316-85094-00	PLATE A4M2160 BNC MTG UK 5X5 SERIES		
319-01164-01	SHIELD A1M2507 DIE CAST T2000 MICROP		
319-01167-00	SHIELD RX A3M2594 T2000		
349-00020-30	SCREW TAPTITE M3X6MM PAN POZI BZ		
349-00020-31	SCREW TAPTITE M3X10MM PAN POZI BZ		
349-00020-32	SCREW TAPTITE M3X8MM PAN POZI BZ Q306 =2 BNC PLATE =2 CHASSIS =2		
349-00020-34	SCREW M3*12 PAN POZI TAPTITE BZ		
349-00020-48	SCREW M4X25MM PAN POZI TAPTITE II BRIGHT ZINC		
349-00020-49	SCREW TAPTITE M4X35MM PAN POZI BZ TOP COVER		
352-00010-35	NUT 8-32 UNC HEX RF PWR XSTR MTG NUT FOR Q305		
356-00010-05	TAG SOLDER 4MM LONG M6144/4.2		
360-01053-02	PLUG A3M2563 PLASTIC D-RANGE BLANKING		
362-01027-01	GASKET A4M2564 RUBBER SEAL T2000 MAIN CONN		
362-01028-00	GASKET A4M2652 130X3MM CONDUCT STRIPS T2000		
362-01058-00	GASKET TO-126 11.1X7.9 D2.4 SIL INSULATION		
365-01391-01	(L)LABEL BLNK 30*10.8MM TAMPERMARK VOID MATT S		

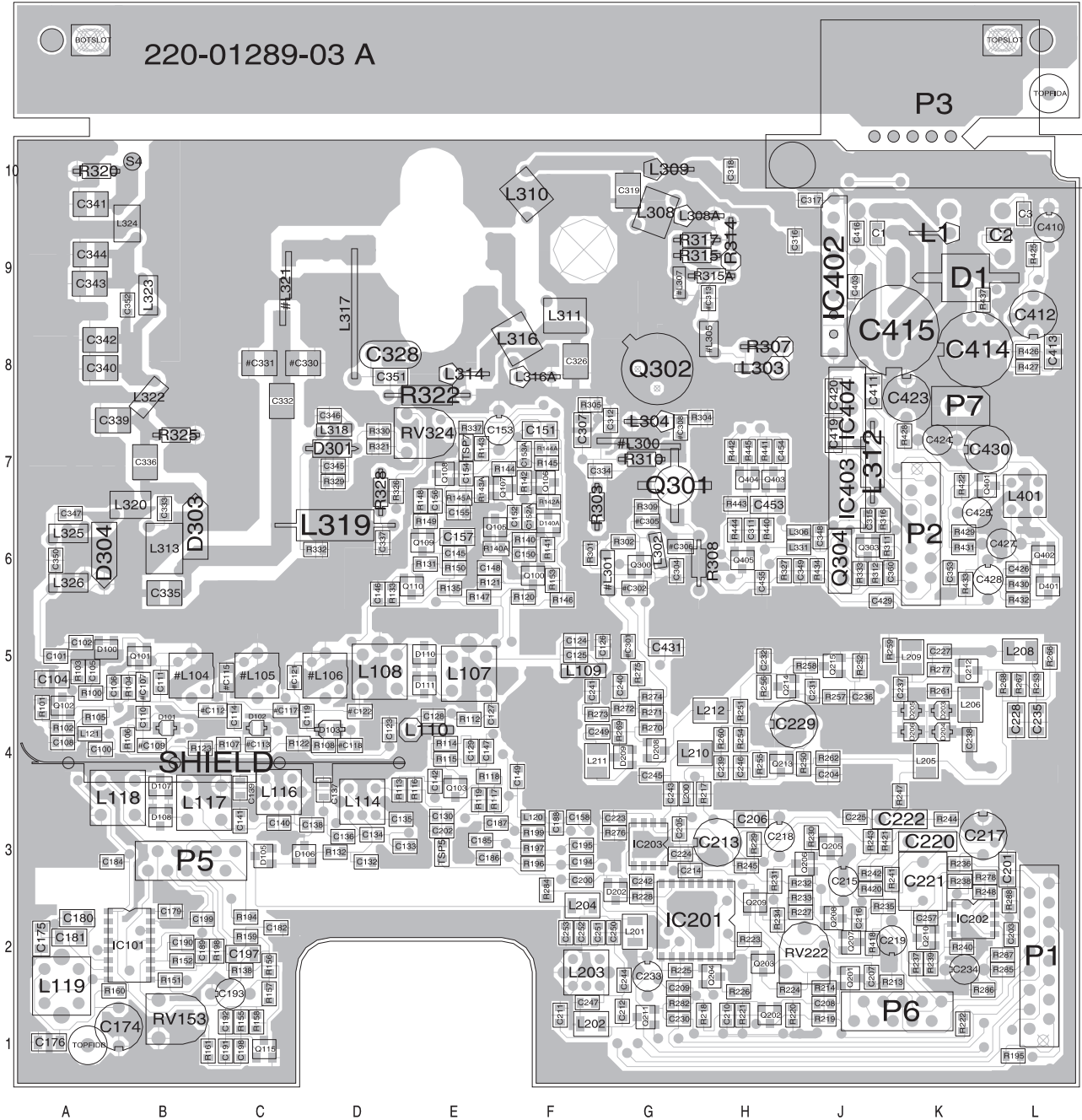
T2000-700/-900 Grid Reference Index (IPN 220-01289-03)

Device	PCB	Circuit	Device	PCB	Circuit	Device	PCB	Circuit	Device	PCB	Circuit
C1	1:J10	1-V9	C192	1:C2	1-M7	#C313	1:H10	1-M0	D107	1:B5	1-S6
C2	1:L10	1-U8	C193	1:C2	1-N7	#C314	2:G9	1-L0	D108	1:B4	1-S5
C3	1:L10	1-V8	C194	1:F4	1-A7	C315	1:J7	1-L1	D108	1:B4	1-S5
C100	1:A5	1-U3	C195	1:F4	1-A8	C316	1:J10	1-P1	D110	1:E6	1-K3
C101	1:A6	1-T3	C197	1:C3	1-O7	C317	1:J10	1-P1	D110	1:E6	1-K3
C102	1:A6	1-S2	C198	1:C2	1-M6	C318	1:H10	1-M1	D111	1:E6	1-K3
C104	1:A6	1-S3	C199	1:B3	1-M7	C319	1:G10	1-P1	D111	1:E6	1-K2
C105	1:A6	1-S3	C200	1:F4	1-B5	C320	2:G10	1-O0	D140A	1:F7	1-P4
C106	1:B6	1-R3	C201	1:L4	1-B4	C321	2:G10	1-O0	D202	1:G4	1-C5
#C107	1:B6	1-R3	C202	1:E4	1-J3	#C323	2:F10	1-P0	D202	1:G4	1-C5
C108	1:A5	1-T3	C203	1:L3	1-J4	C324	2:F10	1-P0	D203	1:K5	1-A0
#C109	1:B5	1-Q3	C204	1:J5	1-C2	C325	2:F10	1-P0	D204	1:K5	1-B0
C110	1:B5	1-Q3	C205	1:G4	1-C2	C326	1:F9	1-P1	D205	1:K5	1-A0
C111	1:B6	1-P3	C206	1:H4	2-L5	C327	2:D10	1-Q0	D206	1:K5	1-B0
#C112	1:C5	1-P3	C207	1:J3	1-B6	C328	1:D9	1-Q1	D208	1:G5	1-F0
#C113	1:C5	1-P3	C208	1:J2	1-B7	C329	2:D10	1-R0	D209	1:G5	1-F1
C114	1:C5	1-P3	C209	1:G3	1-C7	#C330	1:C9	1-S0	D301	1:D8	1-S1
#C115	1:C6	1-O3	C210	1:H2	1-D6	#C331	1:C9	1-R0	D303	1:B7	1-S0
#C117	1:C5	1-O3	C211	1:F2	1-E6	C332	1:C9	1-R0	D304	1:A7	1-T0
#C118	1:D5	1-O3	C212	1:G2	1-F7	C333	1:B7	1-T1	D401	1:L7	1-P9
C119	1:D5	1-N3	C213	1:H4	1-D4	C334	1:G8	1-J1	D401	1:L7	1-P9
#C121	1:C6	1-N2	C214	1:G4	1-C4	C335	1:B7	1-S0			
#C122	1:D5	1-M3	C215	1:J4	1-E4	C336	1:B8	1-T0	IC101	1:B3	1-K6
C123	1:D5	1-M3	C216	1:J3	1-E5	C337	1:D7	1-T1	IC101	1:B3	2-H5
C124	1:F6	1-H2	C217	1:L4	1-F4	C339	1:B8	1-U0	IC101	1:B3	1-L7
C125	1:F6	1-H2	C218	1:H4	1-F5	C340	1:A9	1-U0	IC101	1:B3	1-O7
C126	1:G6	1-H2	C219	1:K3	1-G4	C341	1:A10	1-V0	IC201	1:H3	1-B4
C127	1:E5	1-K5	C220	1:K4	1-G5	C342	1:A9	1-U0	IC202	1:K3	1-G4
C128	1:E5	1-L5	C221	1:K4	1-G5	C343	1:A10	1-V0	IC202	1:K3	2-K5
C129	1:E5	1-M5	C222	1:K4	1-H3	C344	1:A10	1-V0	IC202	1:K3	1-J4
C130	1:E4	1-M5	C223	1:G4	1-E3	C345	1:D8	1-R1	IC203	1:G4	1-E2
C132	1:D4	1-U6	C224	1:G4	1-E2	C346	1:D8	1-R1	IC402	1:J10	2-N5
C133	1:E4	1-O5	C225	1:J4	1-A0	C347	1:A7	1-T1	IC402	1:J10	1-S8
C134	1:D4	1-O6	C227	1:K6	1-C0	C348	1:J7	1-U2	IC403	1:J8	1-K9
C135	1:E4	1-P5	C228	1:L5	1-D1	C349	1:J7	1-V2	IC404	1:J8	1-K8
C136	1:D4	1-P6	C229	1:J5	1-D1	C350	1:A7	1-T1			
C137	1:D5	1-P5	C230	1:G2	1-E7	C351	1:D9	1-P1	L1	1:K10	1-U9
C138	1:D4	1-P6	C231	1:J6	1-E1	C352	1:B10	1-U0	#L104	1:B6	1-Q2
C139	1:C5	1-Q5	C232	1:H6	1-F1	C353	1:K7	1-V2	#L105	1:C6	1-P2
C140	1:C4	1-Q6	C233	1:G3	1-C7	C360	1:K7	1-K1	#L106	1:D6	1-N2
C141	1:C4	1-Q5	C234	1:K3	1-I3	C361	2:G9	1-L0	L107	1:E6	1-J3
C142	1:E5	1-L5	C235	1:L5	1-C1	C403	1:J10	1-S8	L108	1:D6	1-L3
C145	1:E7	1-T4	C236	1:J6	1-D0	C410	1:L10	1-S9	L109	1:F6	1-H3
C146	1:D7	1-U4	C237	1:K6	1-C0	C411	1:J9	1-T8	L110	1:E5	1-L5
C147	1:E5	1-N5	C238	1:K5	1-B0	C412	1:L9	1-T9	L114	1:D4	1-P5
C148	1:E7	1-O4	C239	1:H5	1-F2	C413	1:L9	1-T8	L116	1:C5	1-Q5
C149	1:F5	1-L4	C240	1:G6	1-G1	C414	1:K9	1-U9	L117	1:B4	1-R5
C150	1:F7	1-O4	C241	1:F6	1-G2	C415	1:K9	1-U9	L118	1:B4	1-T5
C151	1:F8	1-Q5	C242	1:G4	1-B3	C416	1:J10	1-U8	L119	1:A3	1-K8
C152	1:F7	1-Q4	C243	1:G5	1-E3	C419	1:J8	1-J8	L120	1:F4	1-L4
C152A	1:F7	1-P4	C244	1:G3	1-F7	C420	1:J9	1-K8	L121	1:A5	1-T3
C153	1:F8	1-Q4	C245	1:G5	1-F2	C423	1:K9	1-K9	L200	1:G5	1-C2
C153A	1:F8	1-R4	C246	1:H5	1-E2	C424	1:K8	1-L9	L201	1:G3	1-G7
C154	1:E8	1-S4	C247	1:F2	1-F6	C425	1:K7	1-N8	L202	1:F2	1-E6
C155	1:E7	1-S4	C249	1:G5	1-G0	C426	1:L7	1-O9	L203	1:F3	1-F6
C156	1:E8	1-S4	C250	1:G3	1-G7	C427	1:L7	1-P8	L204	1:F3	1-H7
C157	1:E7	1-T5	C251	1:G3	1-G6	C428	1:L7	1-Q8	L205	1:K5	1-A0
C158	1:F4	1-K4	C252	1:F3	1-G6	C429	1:J7	1-P8	L206	1:K5	1-B0
C174	1:B2	1-J8	C253	1:F3	1-H6	C430	1:L8	1-M9	L207	2:K5	1-C0
C175	1:A3	1-K8	C257	1:K3	1-F4	C431	1:G6	1-R8	L208	1:L6	1-C1
C176	1:A2	1-K8	C300	2:D9	1-P1	C453	1:H7	1-M1	L209	1:K6	1-D0
C179	1:B3	2-G5	#C301	1:G6	1-H0	C454	1:H8	1-N1	L210	1:H5	1-F2
C180	1:A3	1-L8	#C302	1:G7	1-H0	C455	1:H7	1-J2	L211	1:G5	1-G0
C181	1:A3	1-L7	#C303	2:G10	1-N0				L212	1:H5	1-F1
C182	1:C3	1-N6	C304	1:G7	1-H0	D1	1:K10	1-V9	#L300	1:G8	1-J0
C184	1:B4	1-M8	#C305	1:G7	1-I0	D100	1:A6	1-S2	#L301	1:G7	1-H0
C185	1:E4	1-I6	#C306	1:G7	1-I0	D100	1:A6	1-S2	L302	1:G7	1-I0
C186	1:E4	1-J7	C307	1:F8	1-I1	D101	1:B5	1-Q3	L303	1:H9	1-L1
C187	1:E4	1-N8	#C308	1:G8	1-K0	D102	1:C5	1-P3	L304	1:G8	1-L0
C188	1:F4	1-A6	#C309	2:G8	1-K0	D103	1:D5	1-N3	#L305	1:H9	1-L0
C189	1:B3	1-K6	C310	2:H9	1-M1	D105	1:C4	1-T6	L306	1:J7	1-L1
C190	1:B3	1-K7	C311	1:H7	1-T2	D106	1:D4	1-T6	#L307	1:G10	1-M0
C191	1:C2	1-M6	C312	1:G8	1-K1	D107	1:B5	1-S5	L308	1:G10	1-N0

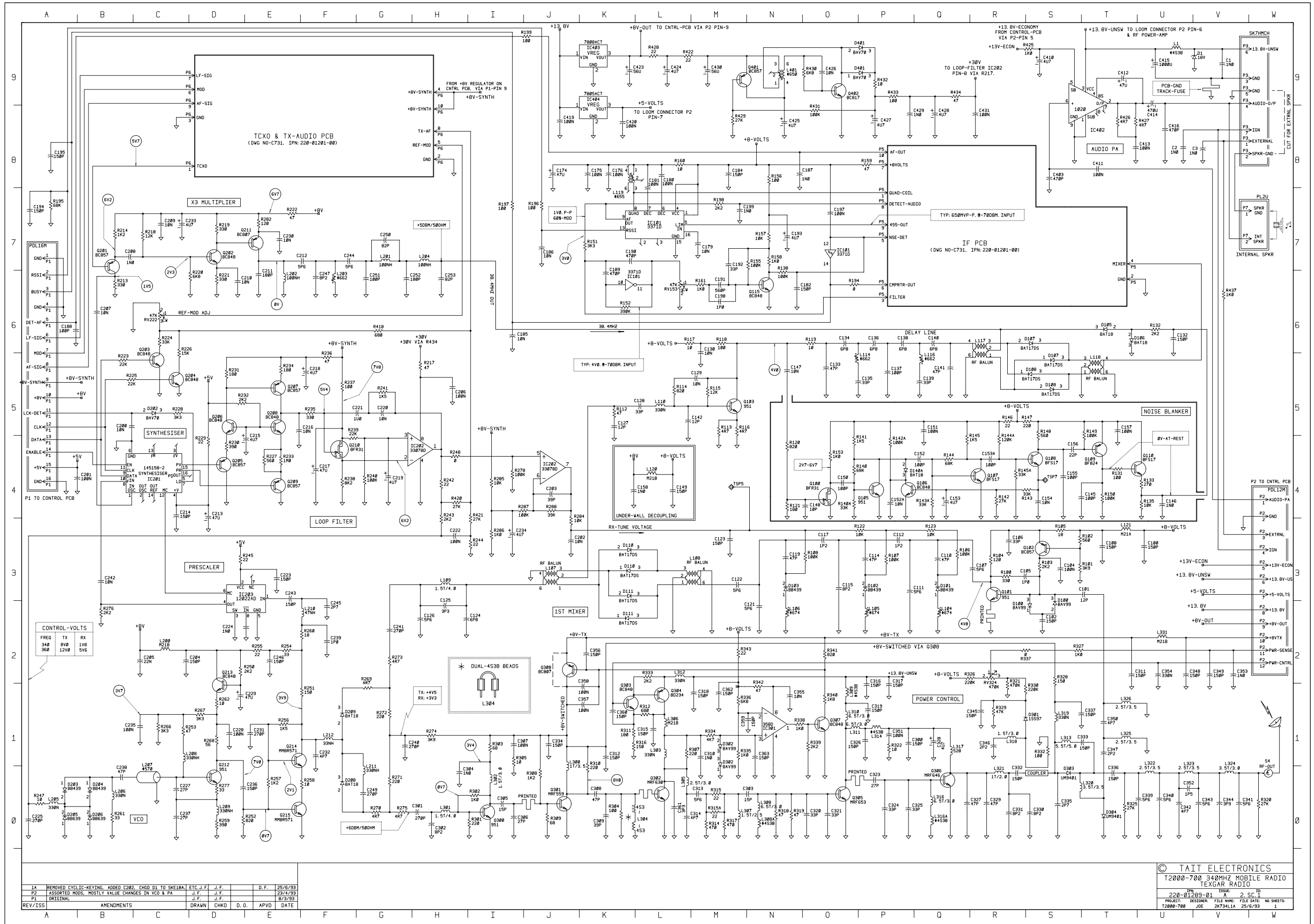
Device	PCB	Circuit	Device	PCB	Circuit	Device	PCB	Circuit	Device	PCB	Circuit
L308A	1:H10	1-N0	R108	1:D5	1-O3	R241	1:K4	1-G5	R428	1:K8	1-L9
L309	1:G10	1-O1	R112	1:E5	1-K5	R242	1:J4	1-H4	R429	1:K7	1-M8
L310	1:F10	1-O1	R113	1:D5	1-M5	R243	1:J4	1-H3	R430	1:L7	1-O9
L311	1:F9	1-O1	R114	1:E5	1-L5	R244	1:K4	1-I3	R431	1:K7	1-O8
L312	1:J8	1-L2	R115	1:E5	1-M5	R245	1:H4	1-D3	R432	1:L7	1-P9
L313	1:B7	1-S1	R116	1:E5	1-M5	R247	1:K4	1-A0	R433	1:K7	1-P9
L314	1:E9	1-P1	R117	1:E4	1-L6	R248	1:L4	1-H4	R434	1:J7	1-Q9
L316	1:F9	1-Q0	R118	1:E5	1-M6	R250	1:J5	1-D2	R437	1:L10	1-V6
L316A	1:F9	1-Q0	R119	1:E4	1-O6	R251	1:H5	1-F1	R440	1:H7	1-M1
L317	1:D9	1-Q1	R120	1:F7	1-N4	R252	1:J6	1-D0	R441	1:H8	1-N1
L318	1:D8	1-R1	R121	1:E7	1-N4	R253	1:L6	1-C1	R442	1:H8	1-N1
L319	1:D7	1-S1	R122	1:C5	1-P3	R254	1:H5	1-E2	R443	1:H8	1-N1
L320	1:B7	1-S0	R123	1:B5	1-Q3	R255	1:H5	1-E2	R444	1:H7	1-O1
#L321	1:C10	1-R0	R131	1:E7	1-T4	R256	1:H6	1-E1	R445	1:H8	1-O1
L322	1:B9	1-U0	R132	1:D4	1-U6	R257	1:J6	1-E0	RV153	1:B2	1-L6
L323	1:B10	1-U0	R133	1:D7	1-U4	R258	1:J6	1-F0	RV222	1:J3	1-C6
L324	1:B10	1-V0	R135	1:E7	1-U4	R259	1:K6	1-D0	RV324	1:E8	1-R2
L325	1:A7	1-T1	R138	1:C3	1-N6	R260	1:H5	1-F2			
L326	1:A7	1-T1	R140	1:F7	1-O4	R261	1:K6	1-B0	S4	1:B10	1-W0
L331	1:J7	1-U2	R140A	1:E7	1-O4	R262	1:J5	1-D1	SHIELD	1:C5	2-K4
L401	1:L8	1-N9	R141	1:F7	1-O4	R266	1:L6	1-C1			
			R142	1:F8	1-R4	R267	1:L6	1-D1	TOPSLOT	1:L10	2-K3
P1	1:L3	2-D5	R142A	1:F8	1-P4	R268	1:L6	1-D1	TSP5	1:E4	1-M4
P2	1:K7	2-D4	R143	1:E8	1-S4	R269	1:G5	1-G1	TSP7	1:E8	1-S4
P3	1:K10	2-D4	R143A	1:E8	1-Q4	R270	1:G5	1-G0			
P5	1:B4	2-H4	R144	1:F8	1-Q4	R271	1:G5	1-G0			
P6	1:K2	2-G2	R144A	1:F8	1-R4	R272	1:G5	1-G1			
P7	1:K9	2-D2	R145	1:F8	1-Q4	R273	1:G5	1-G2			
			R145A	1:E8	1-R4	R274	1:G6	1-H1			
Q100	1:F7	1-O4	R146	1:F7	1-R5	R275	1:G6	1-G0			
Q101	1:B6	1-R3	R147	1:E7	1-S5	R276	1:G4	1-B2			
Q102	1:A5	1-S3	R148	1:E8	1-S5	R277	1:K6	1-D0			
Q103	1:E5	1-M5	R149	1:E7	1-T5	R278	1:L4	1-I4			
Q105	1:E7	1-P4	R150	1:E7	1-T4	R282	1:G2	1-E7			
Q106	1:F8	1-P4	R151	1:B3	1-K7	R284	1:F4	1-J3			
Q107	1:F8	1-R4	R152	1:B3	1-K6	R285	1:L3	1-I4			
Q108	1:E8	1-S4	R153	1:F7	1-O4	R286	1:L2	1-I3			
Q109	1:E7	1-T4	R155	1:C2	1-N7	R287	1:L3	1-J4			
Q110	1:E7	1-U4	R156	1:C3	1-N8	R288	1:L3	1-J4			
Q115	1:C2	1-N6	R157	1:C2	1-N7	R301	1:F7	1-I0			
Q201	1:J3	1-B7	R158	1:C2	1-N7	R302	1:G7	1-I0			
Q202	1:H2	1-D7	R159	1:C3	1-P8	R303	1:G7	1-I1			
Q203	1:H3	1-C5	R160	1:B2	1-L8	R304	1:H8	1-K0			
Q204	1:H3	1-C5	R161	1:C2	1-M6	R305	1:F9	1-I1			
Q205	1:J4	1-D4	R194	1:C3	1-O6	R307	1:H9	1-L1			
Q206	1:J4	1-D5	R195	1:L2	1-A7	R308	1:H7	1-J0			
Q207	1:J3	1-E5	R196	1:F4	1-J7	R309	1:G7	1-J0			
Q208	1:J3	1-E5	R197	1:F4	1-I7	R310	1:G8	1-K0			
Q209	1:H3	1-E4	R198	1:C3	1-M7	R311	1:K7	1-K1			
Q210	1:K3	1-F4	R199	1:F4	1-J9	R312	1:J7	1-L1			
Q211	1:G2	1-E7	R213	1:K3	1-B6	R314	1:H10	1-M0			
Q212	1:K6	1-D0	R214	1:J3	1-B7	R315	1:H10	1-M0			
Q213	1:H5	1-D1	R217	1:H5	2-K6	R315A	1:H10	1-M0			
Q214	1:H6	1-F1	R218	1:H2	1-C7	R316	1:J7	1-K1			
Q215	1:J6	1-F0	R219	1:J2	1-D7	R317	1:H10	1-M0			
Q300	1:G7	1-I0	R220	1:J2	1-D6	#R318	2:G10	1-N0			
Q301	1:G8	1-J0	R221	1:H2	1-D6	#R319	2:G10	1-N0			
Q302	1:G9	1-L0	R222	1:K2	1-E7	R320	1:A10	1-V0			
Q303	1:J7	1-K1	R223	1:H3	1-B5	R321	1:D8	1-R1			
Q304	1:J7	1-L1	R224	1:J2	1-C6	R322	1:E9	1-P1			
Q305	2:F10	1-O0	R225	1:G3	1-B5	R325	1:B8	1-T0			
Q306	2:E10	1-Q0	R226	1:H2	1-C5	R326	1:D8	1-R2			
Q401	1:L8	1-N9	R227	1:J3	1-E4	R327	1:H7	1-S2			
Q402	1:L7	1-O9	R228	1:G3	1-C5	R328	1:D8	1-S2			
Q403	1:H8	1-N1	R229	1:H4	1-D4	R329	1:D8	1-R1			
Q404	1:H8	1-N1	R230	1:J4	1-D4	R330	1:D8	1-S1			
Q405	1:H7	1-O1	R231	1:H4	1-D5	R332	1:D7	1-S1			
			R232	1:J4	1-D5	R333	1:J7	1-L2			
R100	1:A6	1-R3	R233	1:J3	1-E4	R337	1:E8	1-S2			
R101	1:A5	1-S3	R234	1:H3	1-E5	R418	1:J3	1-G6			
R102	1:A5	1-S3	R235	1:J3	1-F5	R420	1:J4	1-H4			
R103	1:A6	1-S3	R236	1:K4	1-F5	R421	1:J4	1-I3			
R104	1:B6	1-R3	R237	1:K3	1-F5	R422	1:K8	1-L9			
R105	1:A5	1-S3	R238	1:K4	1-F4	R425	1:L10	1-S9			
R106	1:B5	1-Q3	R239	1:K3	1-F4	R426	1:L9	1-T8			
R107	1:C5	1-P3	R240	1:K3	1-G4	R427	1:L9	1-T8			



T2000-700/-900 RF PCB (IPN 220-01289-03) - Bottom Side

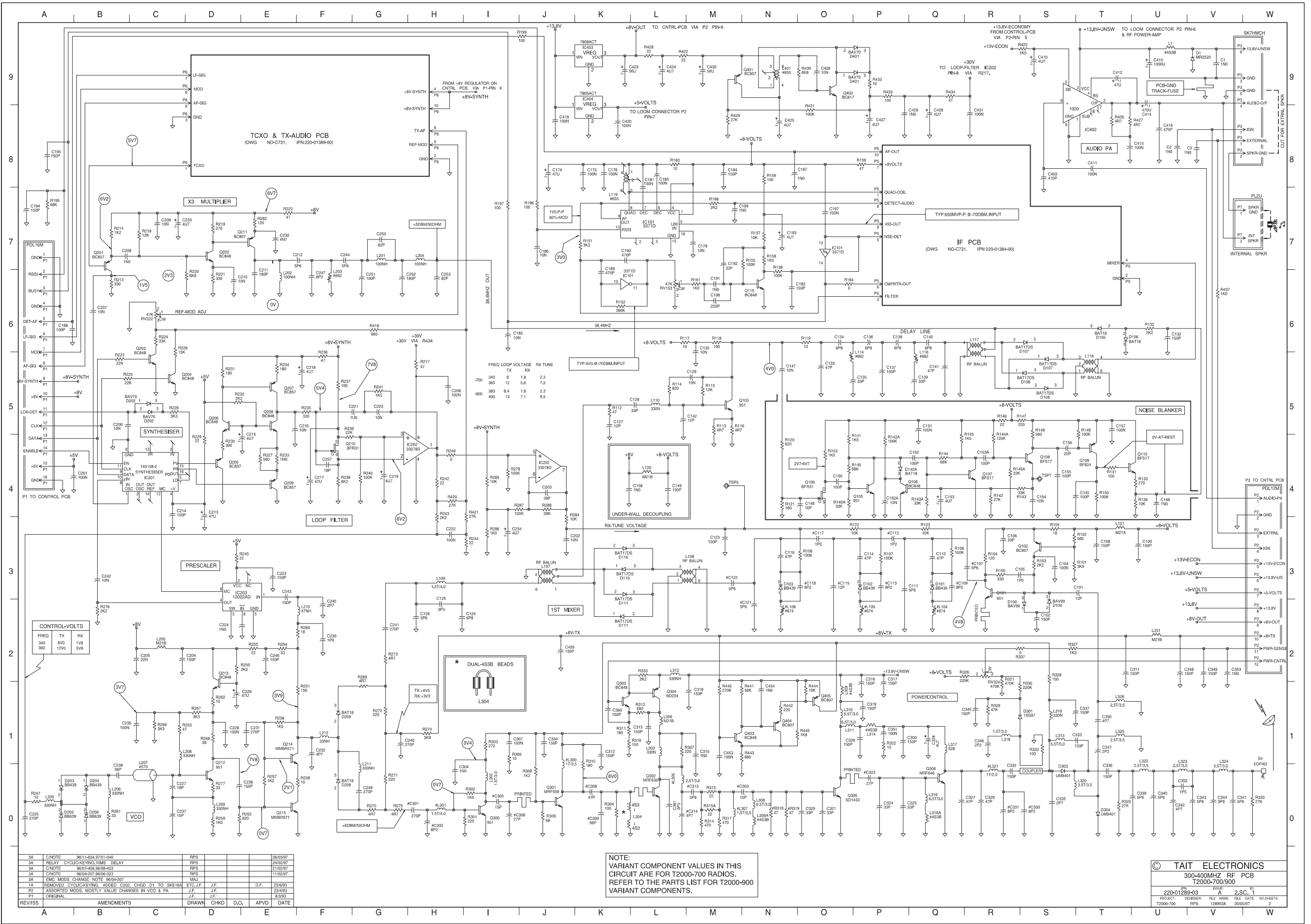


T2000-700/-900 RF PCB (IPN 220-01289-03) - Top Side



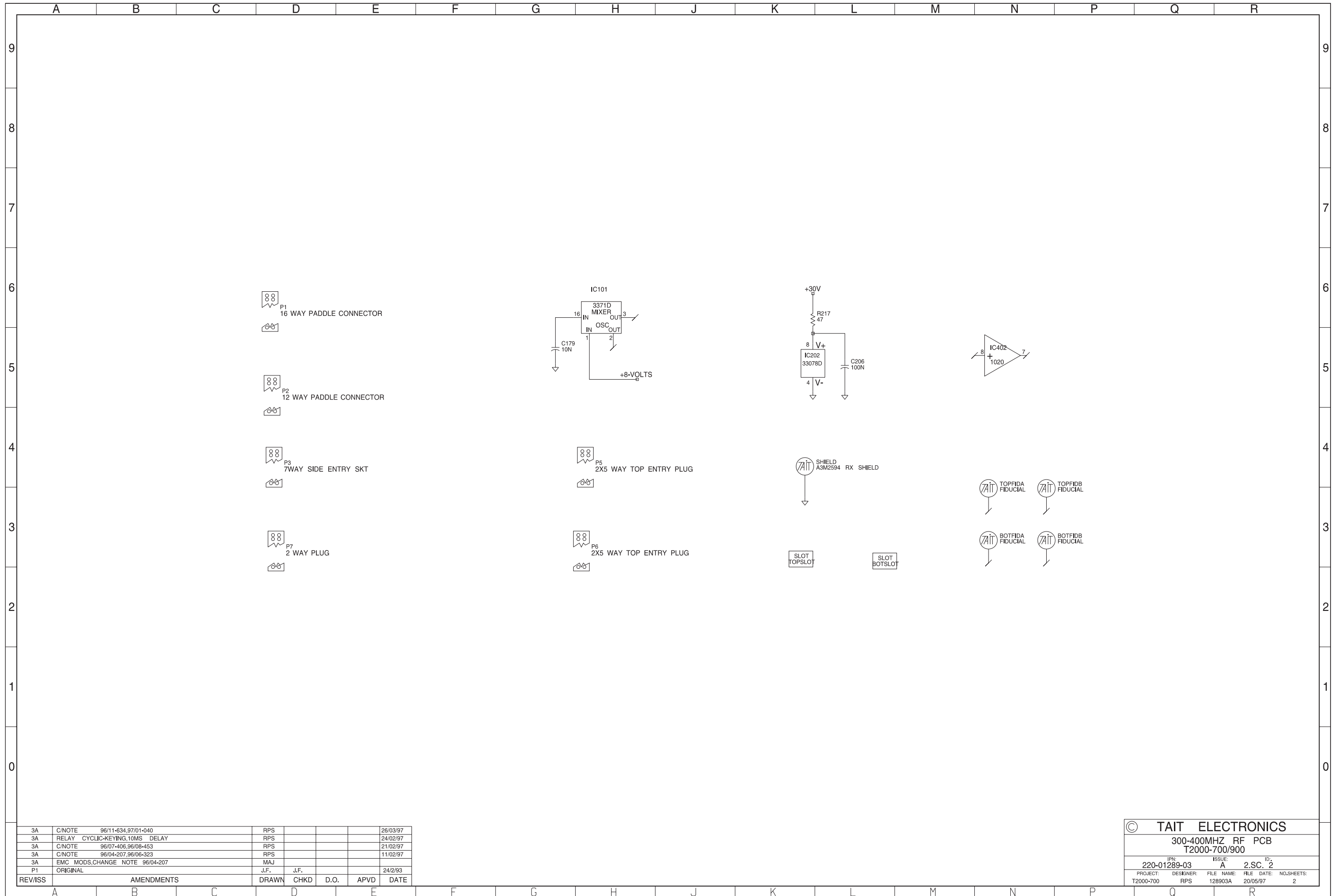
REV/ISS	AMENDMENTS	DRAWN	CHKD	D.O.	APVD	DATE
1A	REMOVED CYCLIC-KEYING, ADDED C282, CHGD D1 TO SK18A1, ETC. J.F.	J.F.				25/6/93
P2	ASSORTED MODS, MOSTLY VALUE CHANGES IN VCO & PA	J.F.				23/4/93
P1	ORIGINAL	J.F.				8/3/93

© TAIT ELECTRONICS			
T2000-700 340MHZ MOBILE RADIO			
TEXGAR RADIO			
IPN	ISSUE	SCALE	
220-01289-01	A	2 SC 1	
PROJECT: DESIGNER: FILE NAME: DATE: NO. SHEETS:			
T2000-700	JOE	2K734L1A	25/6/93 1



© TAIT ELECTRONICS
300-400MHz RF PCB
T2000-700/900
IPN 220-01289-03
REVISED BY DATE
PROJECT: T2000-700 RPS 128903A 20/05/97 NO. SHEETS: 2

NOTE:
VARIANT COMPONENT VALUES IN THIS CIRCUIT ARE FOR T2000-700 RADIOS. REFER TO THE PARTS LIST FOR T2000-900 VARIANT COMPONENTS.



3A	C/NOTE	96/11-634,97/01-040	RPS			26/03/97	
3A	RELAY	CYCLIC-KEYING,10MS DELAY	RPS			24/02/97	
3A	C/NOTE	96/07-406,96/08-453	RPS			21/02/97	
3A	C/NOTE	96/04-207,96/06-323	RPS			11/02/97	
3A	EMC	MODS.CHANGE NOTE 96/04-207	MAJ				
P1	ORIGINAL		J.F.	J.F.		24/2/93	
REV/ISS	AMENDMENTS		DRAWN	CHKD	D.O.	APVD	DATE

© TAIT ELECTRONICS			
300-400MHZ RF PCB			
T2000-700/900			
IPN:	ISSUE:	ID:	
220-01289-03	A	2.SC. 2	
PROJECT:	DESIGNER:	FILE NAME:	FILE DATE:
T2000-700	RPS	128903A	20/05/97
			NO.SHEETS:
			2